



Ministry of  
Forests, Lands, Natural  
Resource Operations  
and Rural Development

# *Resource Management Planning in Our Region*



- Lori Borth,  
Director,  
Strategic  
Initiatives North  
Area, FLNRORD

- Justin Calof,  
Director,  
Strategic  
Initiatives North  
Area, FLNRORD



# Outline

1. Context
2. What is Resource Management Planning?
3. Discussion





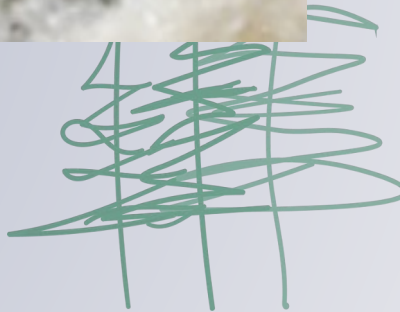


Ministry of  
Forests, Lands, Natural  
Resource Operations  
and Rural Development

# Context



# Climate Change





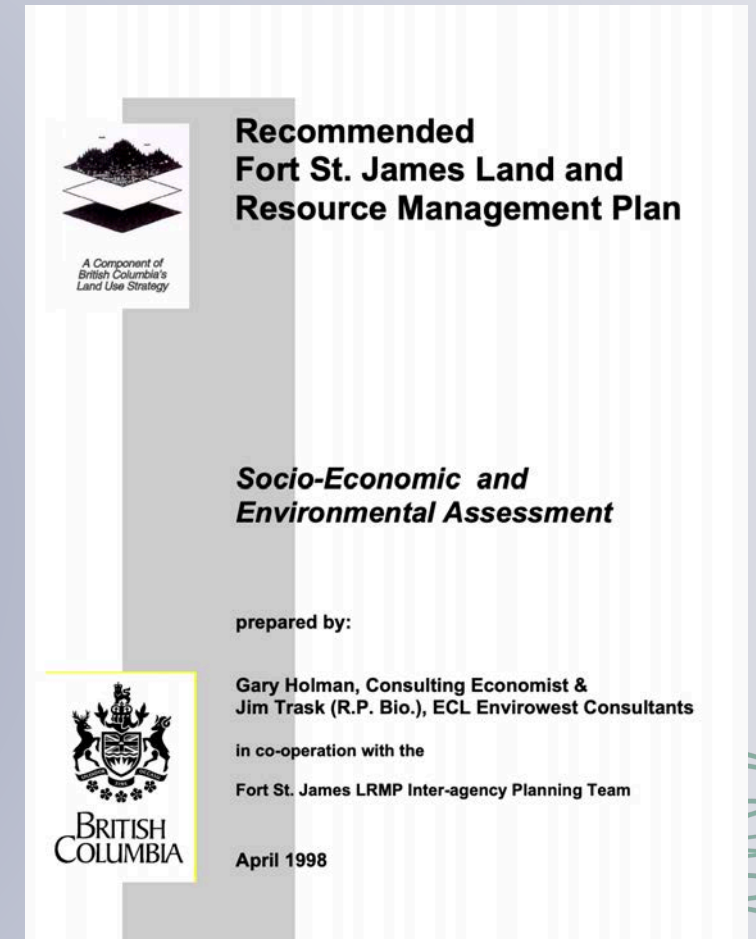
# Timber Supply and Forest Sector Transition





# Planning needs to be Updated

- Land use plans in the region were approved 1997-2000.
- Past plans could not foresee climate change-induced impacts on our forests.
- The role that First Nations played in these was not consistent with reconciliation.

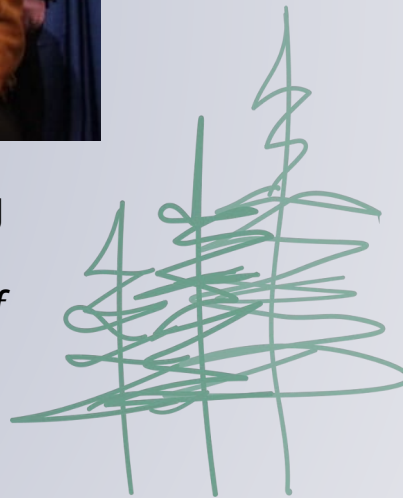




# Reconciliation in British Columbia



Above: CSFN Chiefs and BC Leaders at signing  
of Pathway Forward 2.0 Agreement  
Left: Passing of the *Declaration on the Rights of  
Indigenous Peoples Act*, BC Legislature







Ministry of  
Forests, Lands, Natural  
Resource Operations  
and Rural Development

# Resource Management Planning

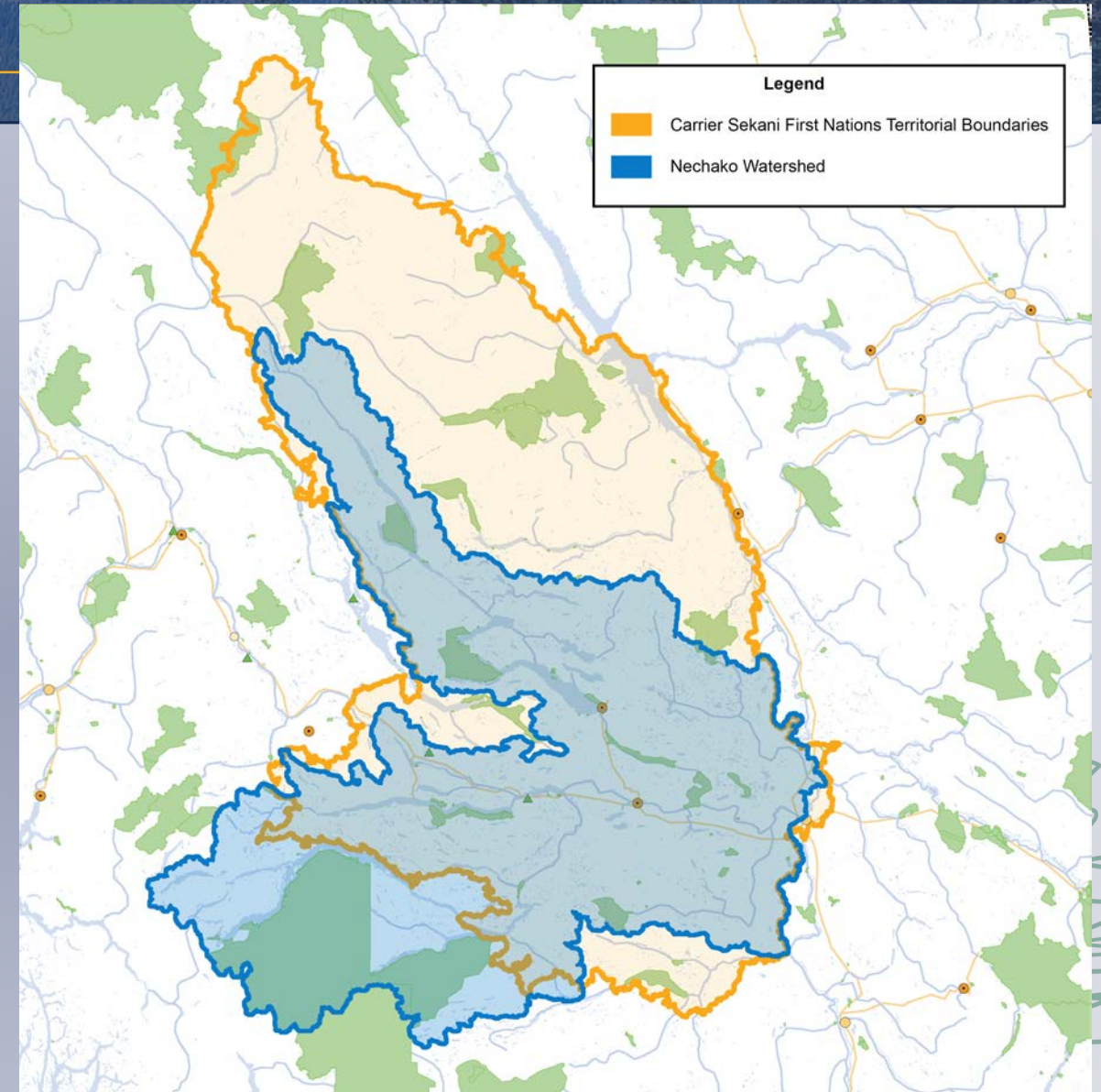
[www.landuseplanning.gov.bc.ca](http://www.landuseplanning.gov.bc.ca)



# Carrier Sekani First Nations Territories

Since 2014, the Province has been working with seven Carrier Sekani First Nations in the region on the Environmental Stewardship Initiative to assess the 'Current Condition' of values based on cumulative effects that both governments 'trust'.

The information gathered from this project will inform Resource Management Planning.





# Carrier Sekani First Nations





# Reduction in Moose Habitat

Key Finding: Reduced areas of potential core effective moose habitat remain (pink and green areas are more effective).

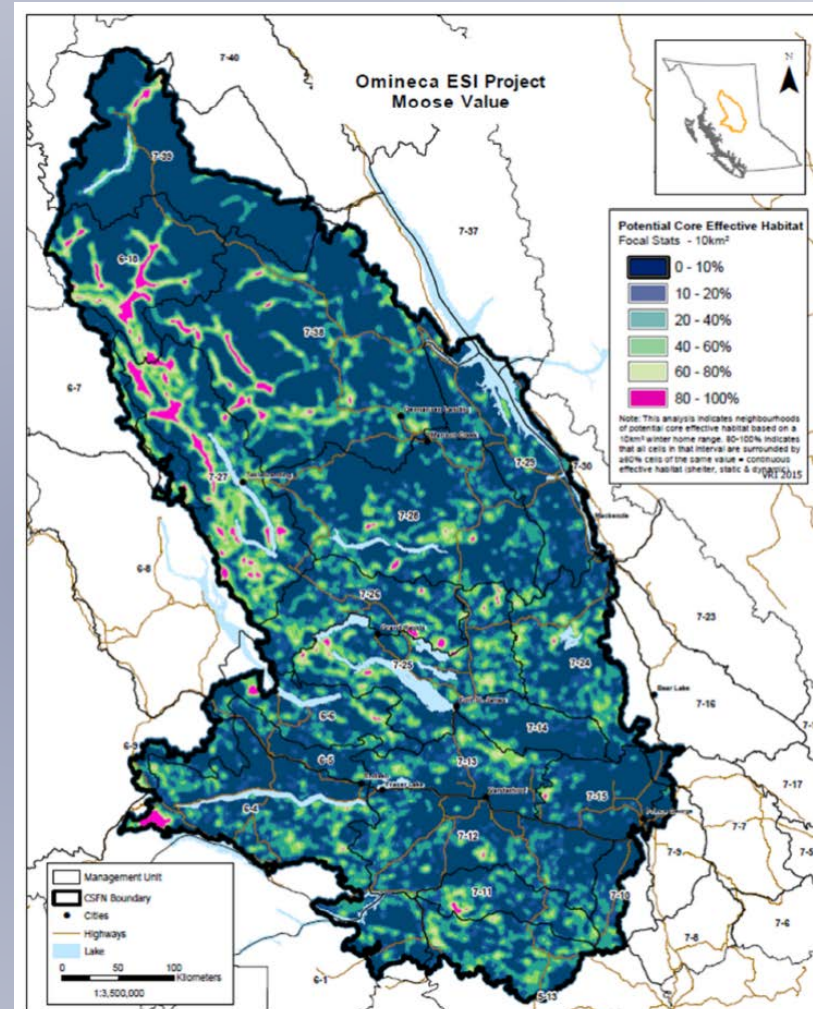


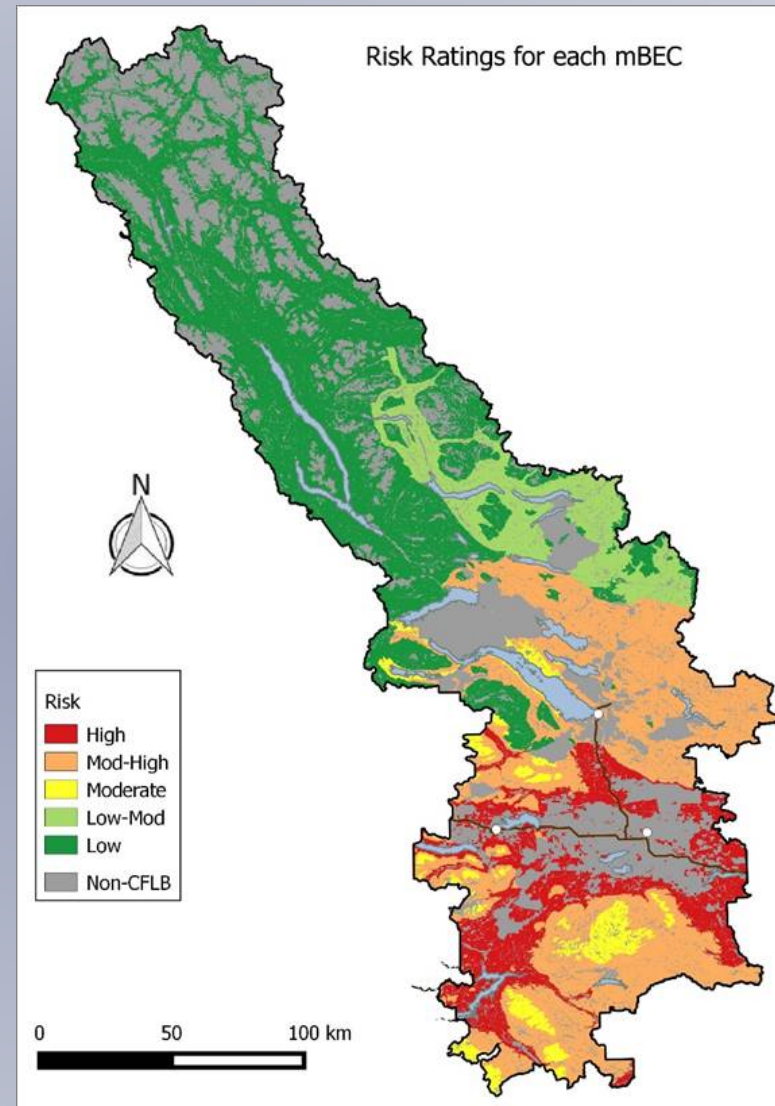
Figure 19: Potential Core Effective Habitat for Moose – Results of 10 km<sup>2</sup> Focal Statistics (neighbourhood analysis for clustering of effective values).





# Increased risk to forest biodiversity

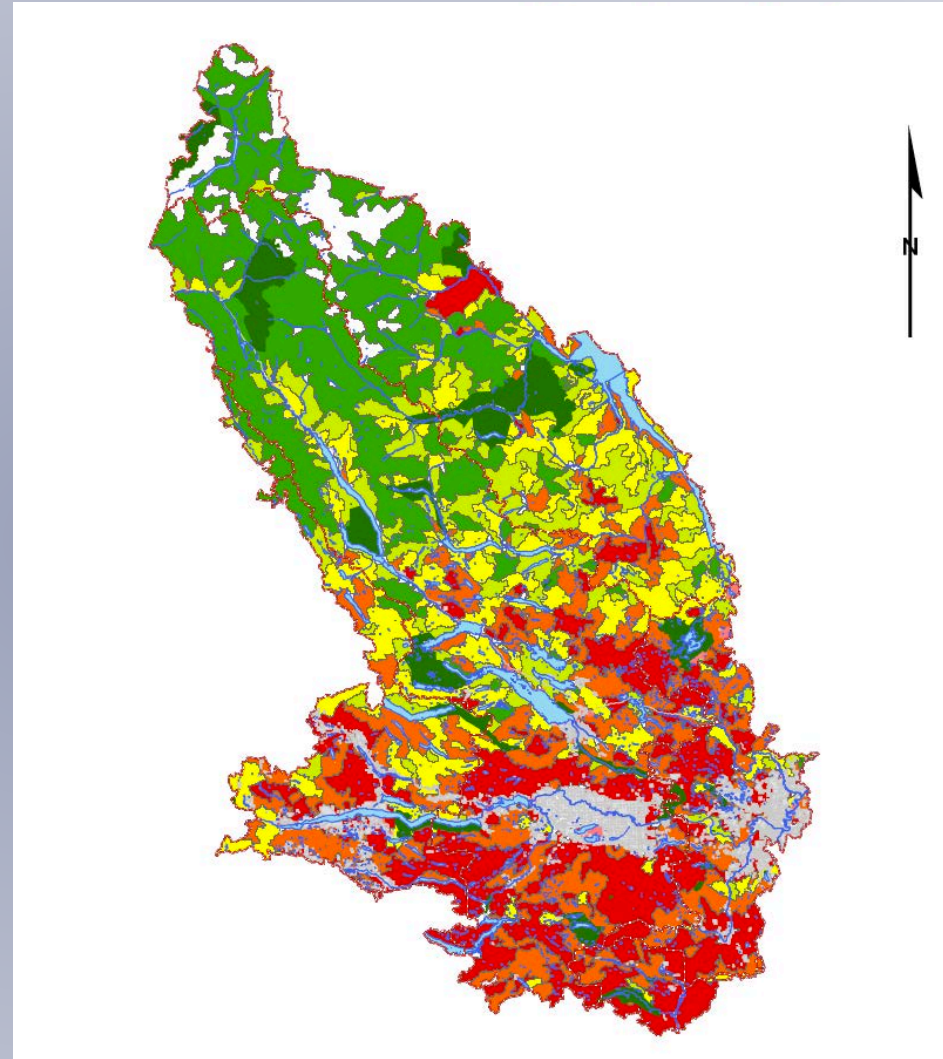
Key Finding: Increased risk to forest biodiversity values due to reduced old growth distribution. Areas in red indicate higher levels of risk.





# Watershed Health

- Key Findings: Riparian habitat reduction, sedimentation and risks of erosion are contributing to higher levels of watershed health risks. Red indicated higher levels of risk





# Focusing on Forestry and Forests





# Resource Management Planning: Values







Ministry of  
Forests, Lands, Natural  
Resource Operations  
and Rural Development

# Discussion



# Questions about Resource Management Planning?

- We'll keep track of all questions asked verbally and in the chat.
- If we don't have answers now, we will work on getting answers back to you.
- We'll use these questions to design future engagement sessions.
- **Please put email address in chat box if you would like to participate in a survey.**





# Next Steps

- We will continue to engage with local governments and stakeholders in the region over the coming months.
- If you provide your email, we will send a summary of this presentation and a Questions and Answers Document to you.
- If you have questions or comments, email [Omineca.RMP@gov.bc.ca](mailto:Omineca.RMP@gov.bc.ca)







Ministry of  
Forests, Lands, Natural  
Resource Operations  
and Rural Development

# Thank You!

[www.landuseplanning.gov.bc.ca](http://www.landuseplanning.gov.bc.ca)