

Rio Tinto

WEI Main Table meeting #15

TWG Update

Wednesday, December 9, 2020



TWG Update

- *Objective is to support MT by developing draft objectives, PMs, and flow alternatives.*
- *Technical merit: not interpreting priorities.*
- *Bi-weekly meetings (2 since last MT meeting).*
- *6 month timeframe.*
- *3 phases: brainstorming, technical work, and review/recommendation.*

TWG Update

- *Brainstorming:*
 - *TWG with support of subject matter experts.*
 - *Review MT interests and expand as needed.*
 - *Identify general “pathways of effect”.*
 - *Identify knowledge/data gaps and next steps.*
 - *Focus discussion on issues sensitive to operations.*
 - *October - February*
 - *Deliverable:*
 - *Prioritized initial list of issues.*
 - *List of technical work.*

TWG Update

- *Technical work*
 - *Subject matter experts*
 - *Review and summarize existing information*
 - *Confirm effect: mechanism, scale, timing, location etc.*
 - *Identify uncertainty*
 - *Recommend PMs*
 - *December - March*
 - *Deliverable: technical summaries*

TWG Update

- *Review/recommendation*
 - *Review technical summaries*
 - *Confirm Issues*
 - *Identify PMs*
 - *Develop alternative flow scenarios*
 - *Issue-specific, hybrid, general*
 - *January – April*
 - *Deliverables:*
 - *Revised list of issues w/ technical rationale*
 - *Shortlist of objectives and PMs*
 - *Range of flow scenarios*

TWG Update

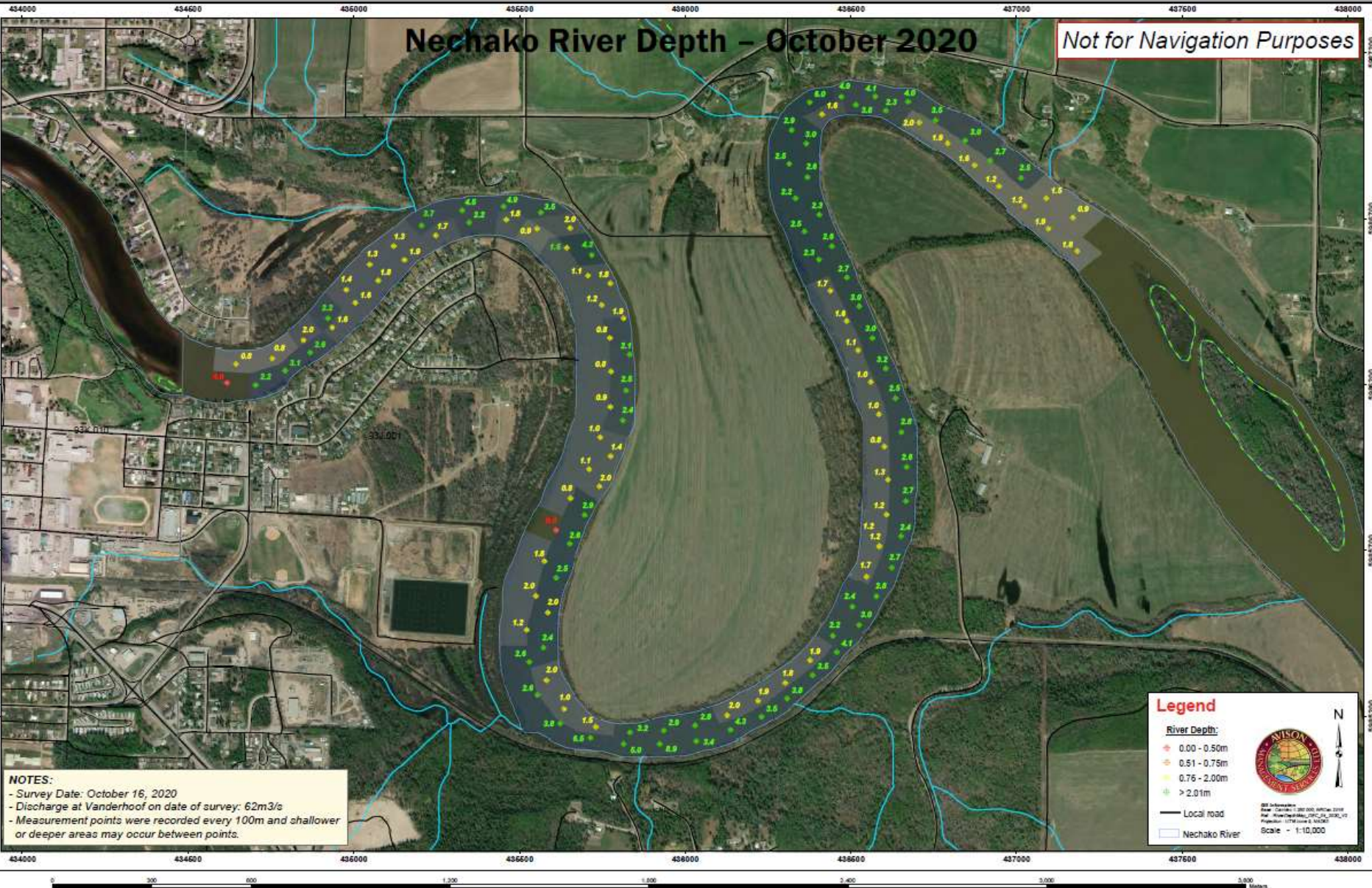
- *Active technical summaries underway for fish in the river, fisheries and aquatics in the reservoir, other topics :*
 - *Salmon temperature tolerance*
 - *Fish entrainment*
 - *Ramping*
 - *Fish tributary access (river)*
 - *Bull trout overwintering habitat*
 - *Hydrographs*

TWG Update

- *Reservoir productivity*
- *Water quality*
- *Water temperature*
- *Caribou*
- *Floatplane access*

Nechako River Depth – October 2020

Not for Navigation Purposes



TWG Update

- *Anticipating additional technical work for:*
 - *Salmon*
 - *River fish*
 - *Reservoir fish*
 - *Flooding*
 - *Erosion*
 - *Wildlife*

TWG Update

- *Also support for South Side Working Group*
 - *Water quality*
 - *Erosion and LWD*
 - *Navigation*
 - *Water intakes*

Bull Trout (*Salvelinus confluentus*)



Dolly Varden (*Salvelinus malma*) and Bull Trout (*Salvelinus confluentus*).
Look very similar. Distribution or genetics best to ID. This photo has one of each and a hybrid)



Bull Trout (*Salvelinus confluentus*). Light spots on dark background.
Rainbow Trout (*Oncorhynchus mykiss*). Dark spots on light background.

