



RioTinto

Nechako Reservoir / River / Freshet Information Sharing – Community Leaders

22 June 2022

Prepared by Andrew Czornohalan and Alec
Mercier

Key Focus

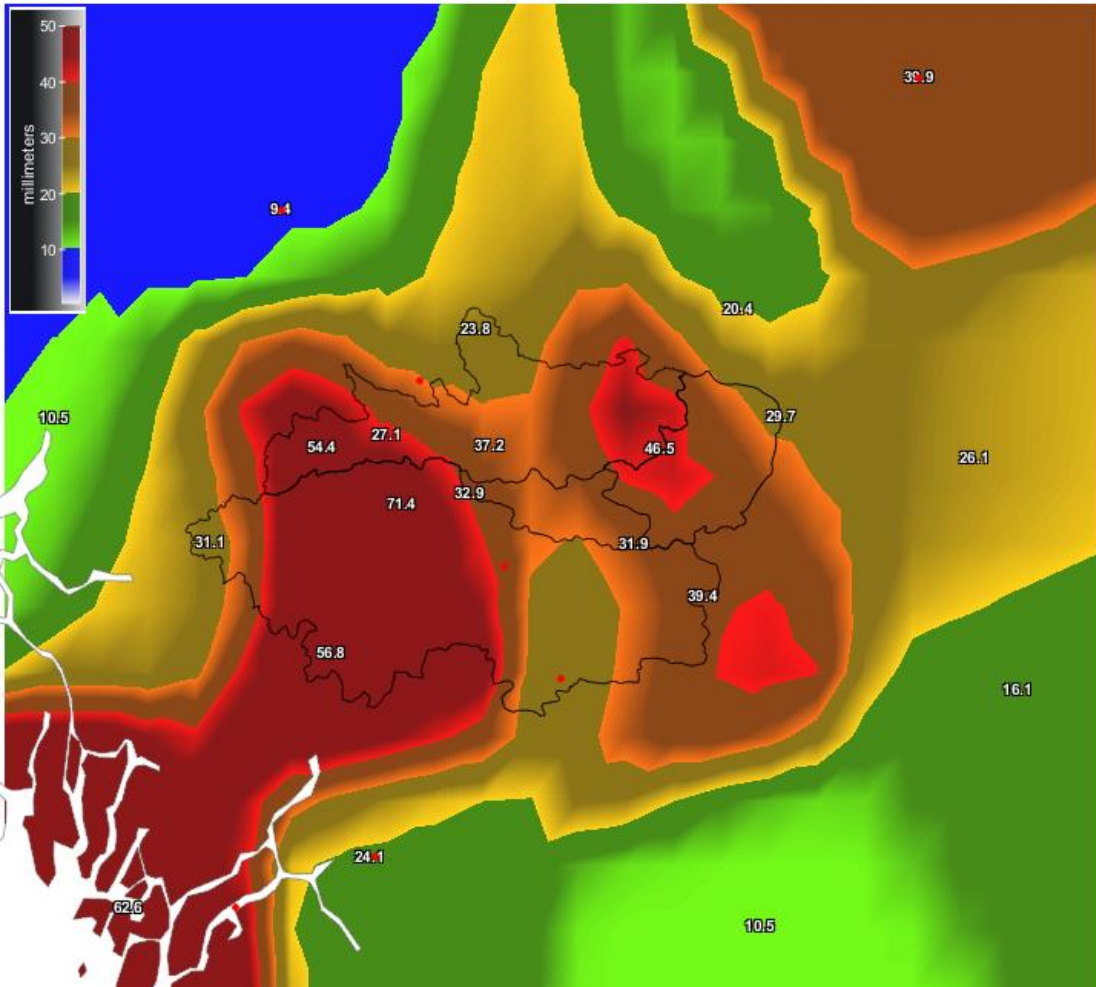
1. Current Watershed Data: Precipitation and elevation
2. Freshet Forecast, looking to the spring / summer and next steps



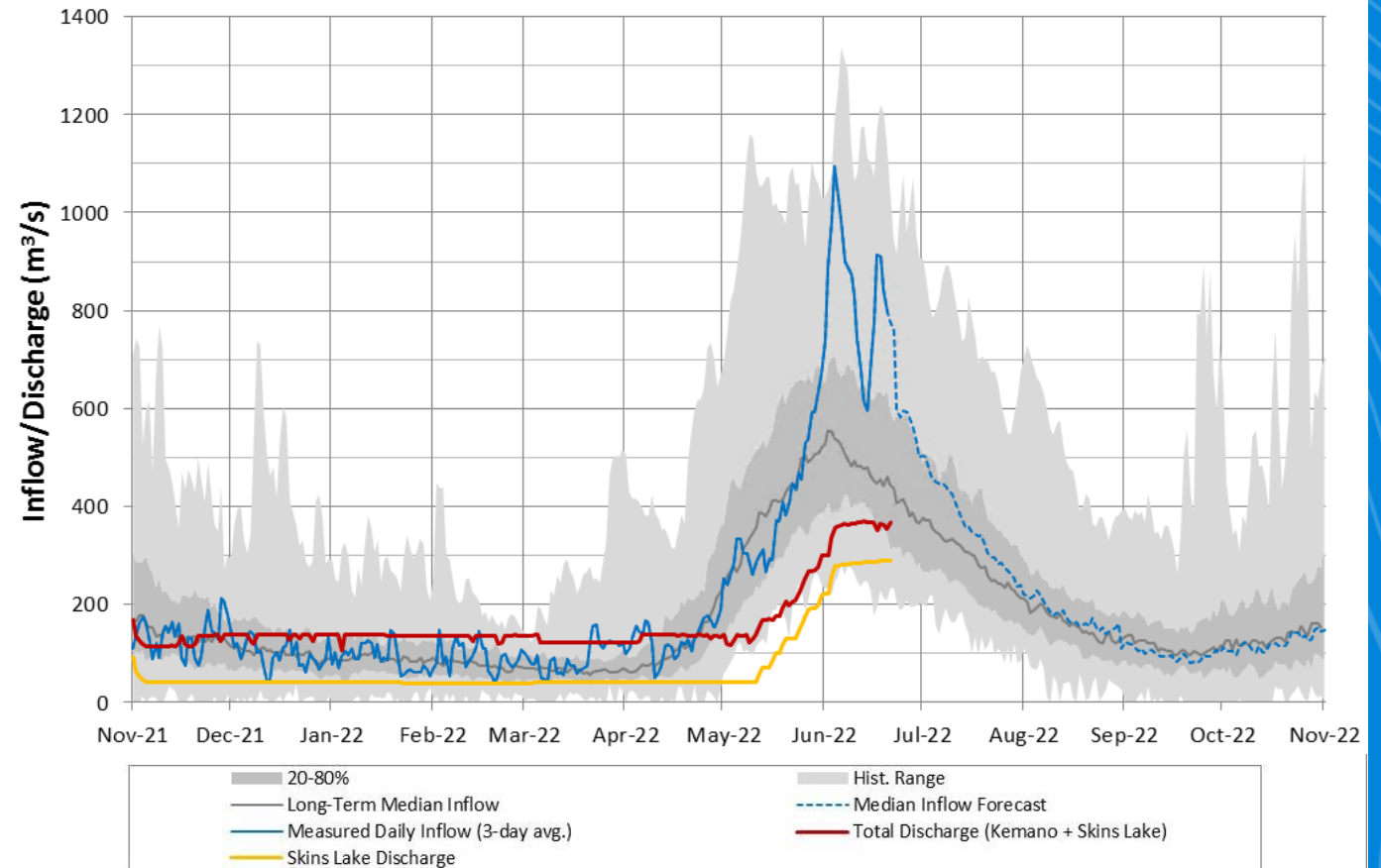
Observed Precipitation, Inflows vs Historical

7-day cumulative rainfall

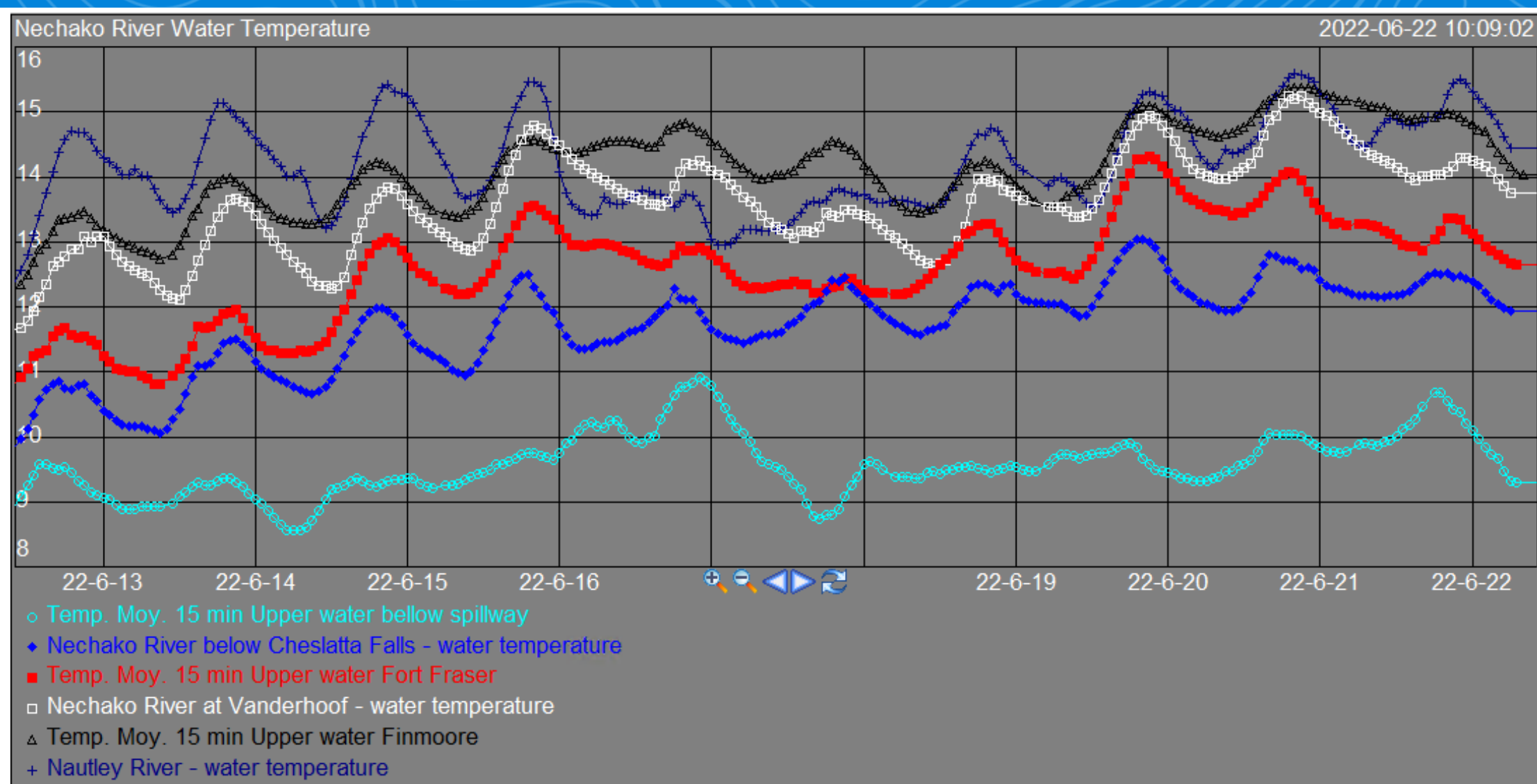
[Back to Rainfall](#)



Nechako Reservoir Operation
Observed Inflow and Discharge 2021-2022

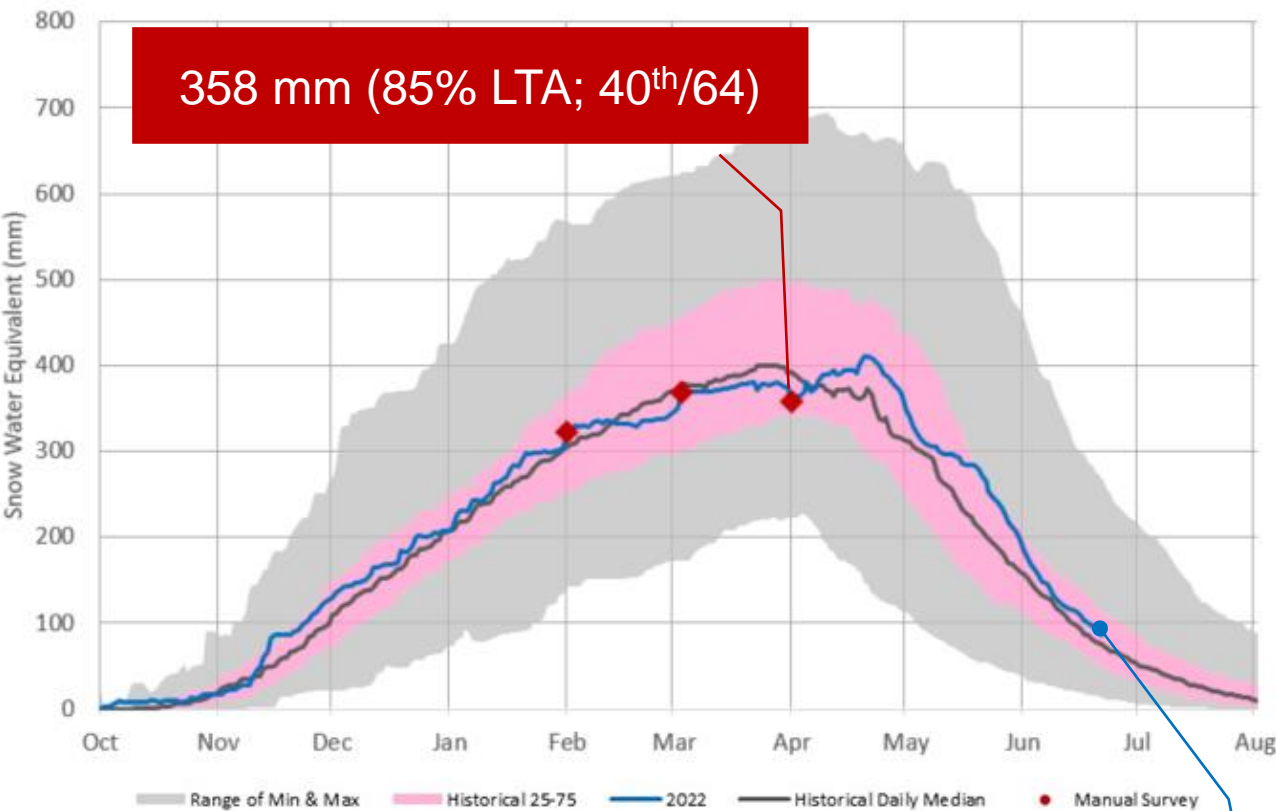


Observed Water Temperatures

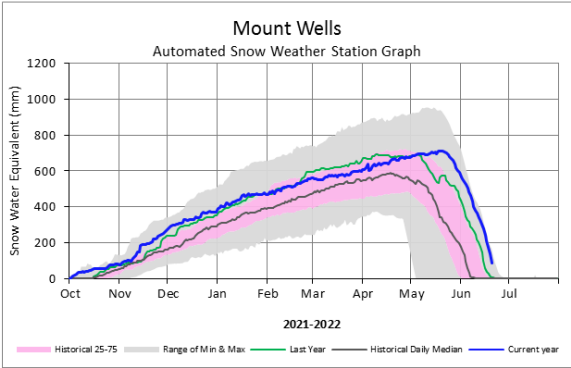
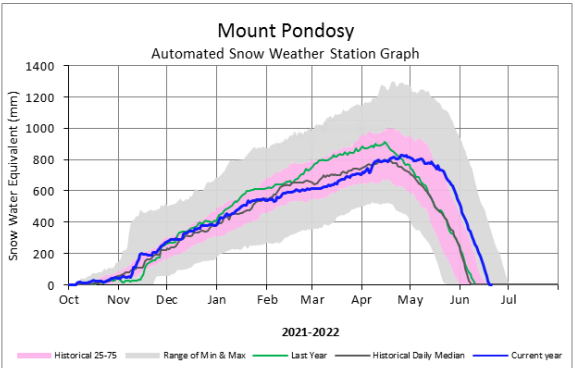
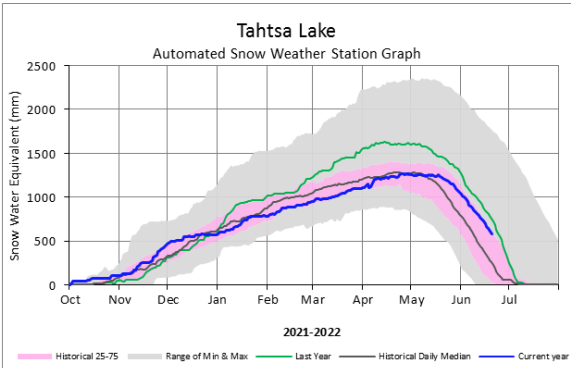


Current Snowpack

Nechako Reservoir Snowpack

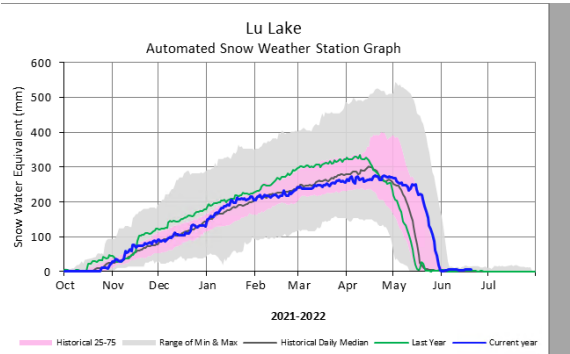


85 mm (96% LTA; 27th/64)



Station	Current Value (mm)	LTA* (mm)	%LTA*	Percentile Rank*
Tahtsa Lake	547	411	133%	71%
Mount Pondosy	0	31	0%	0%
Mount Wells	48	10	474%	96%

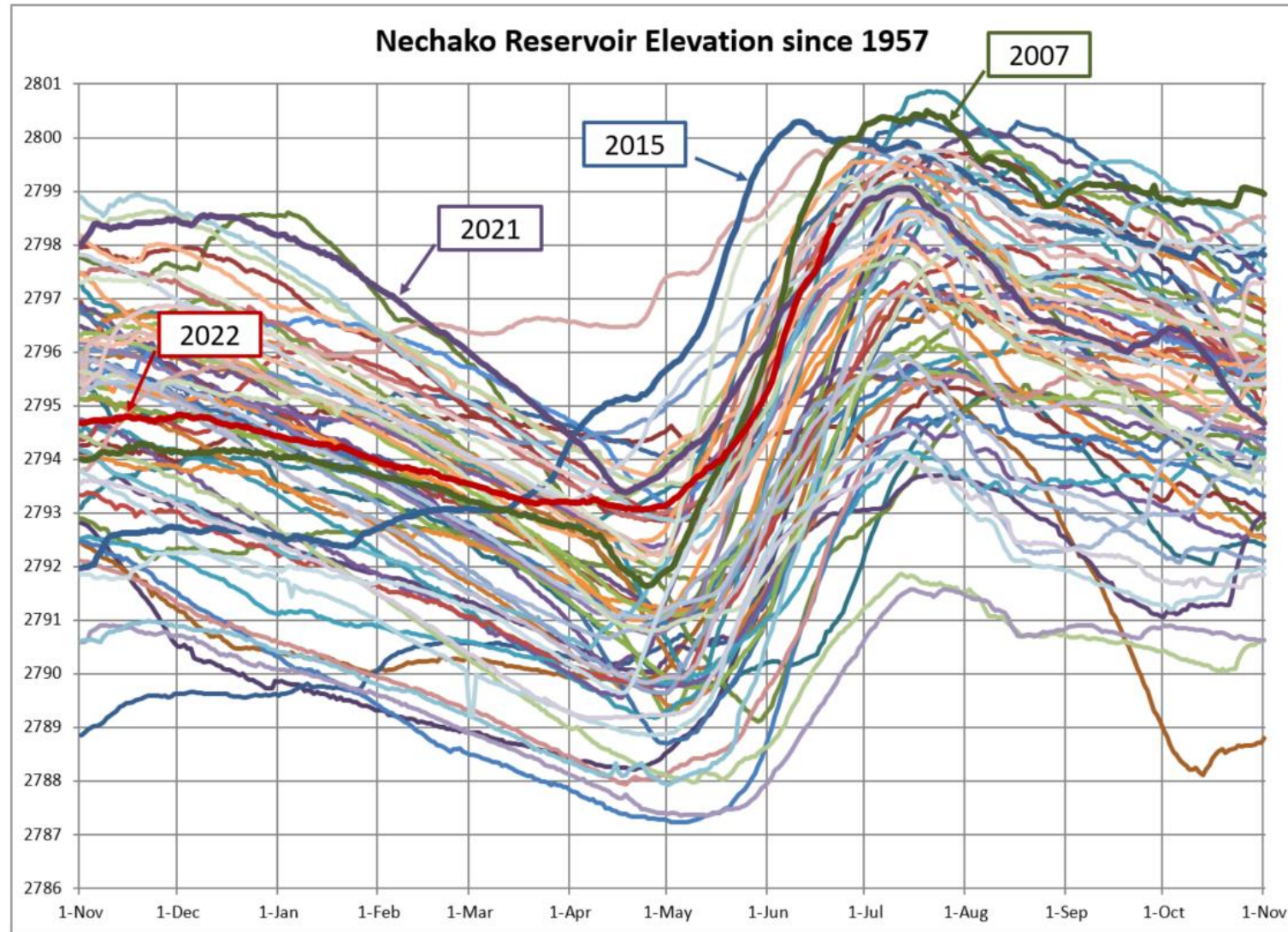
*(1992-2021)



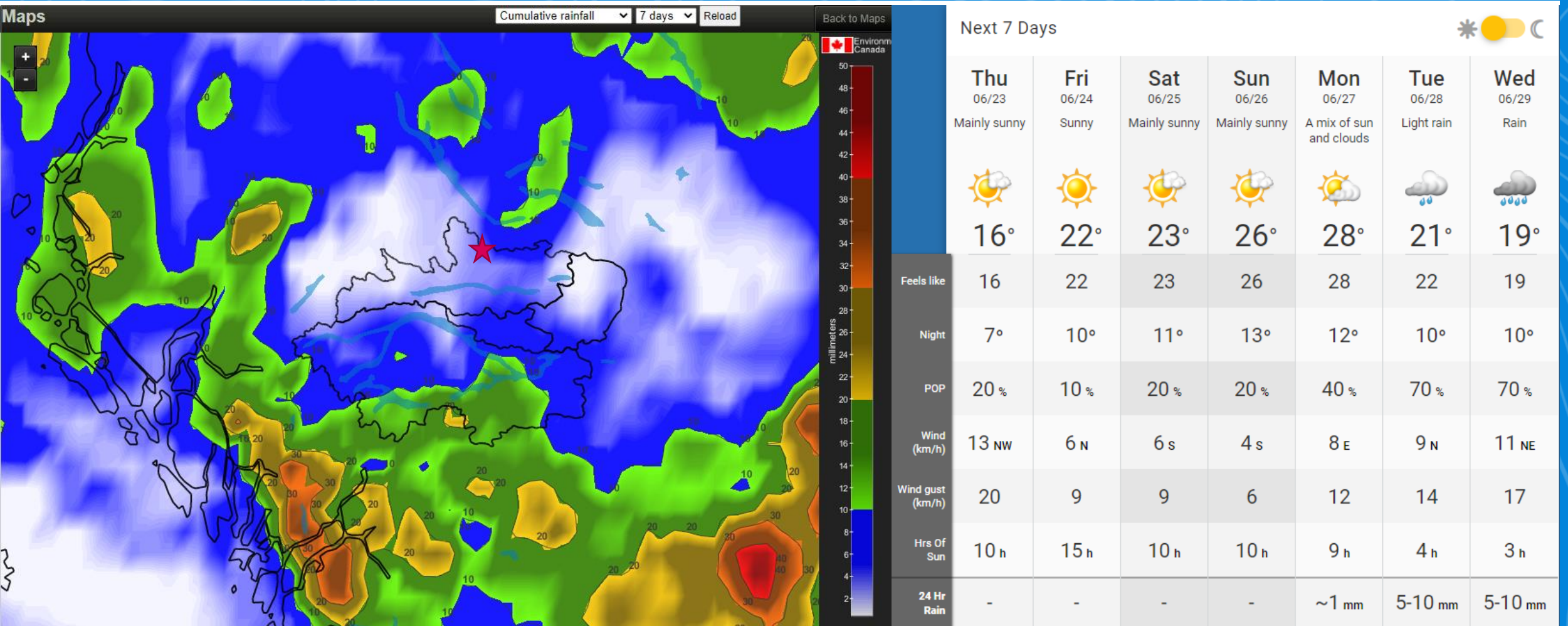
Station	Current Value	%LTA*
Lu Lake	0	0%

*(1997-2021)

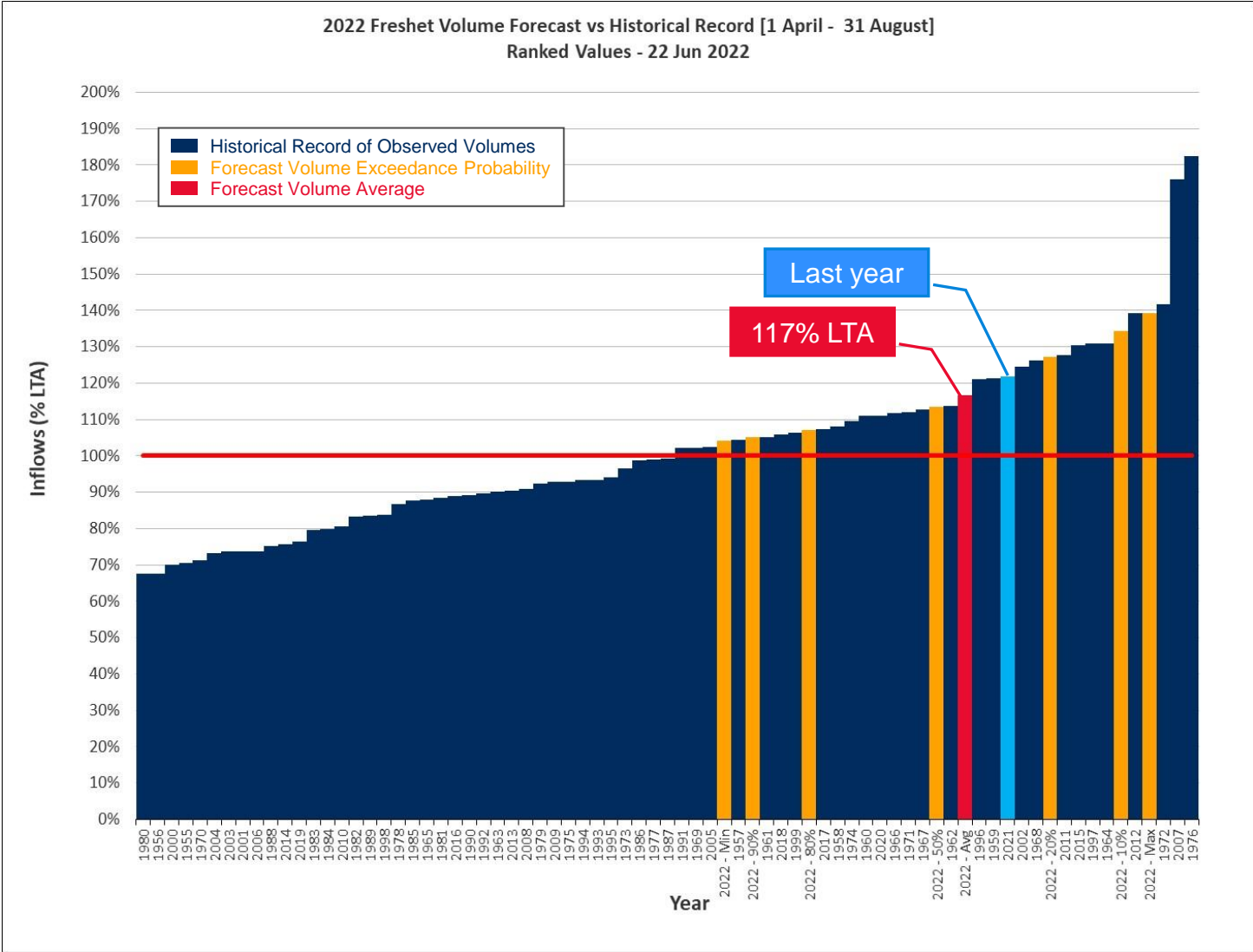
Historical Reservoir Elevation



7 Day Weather Forecast

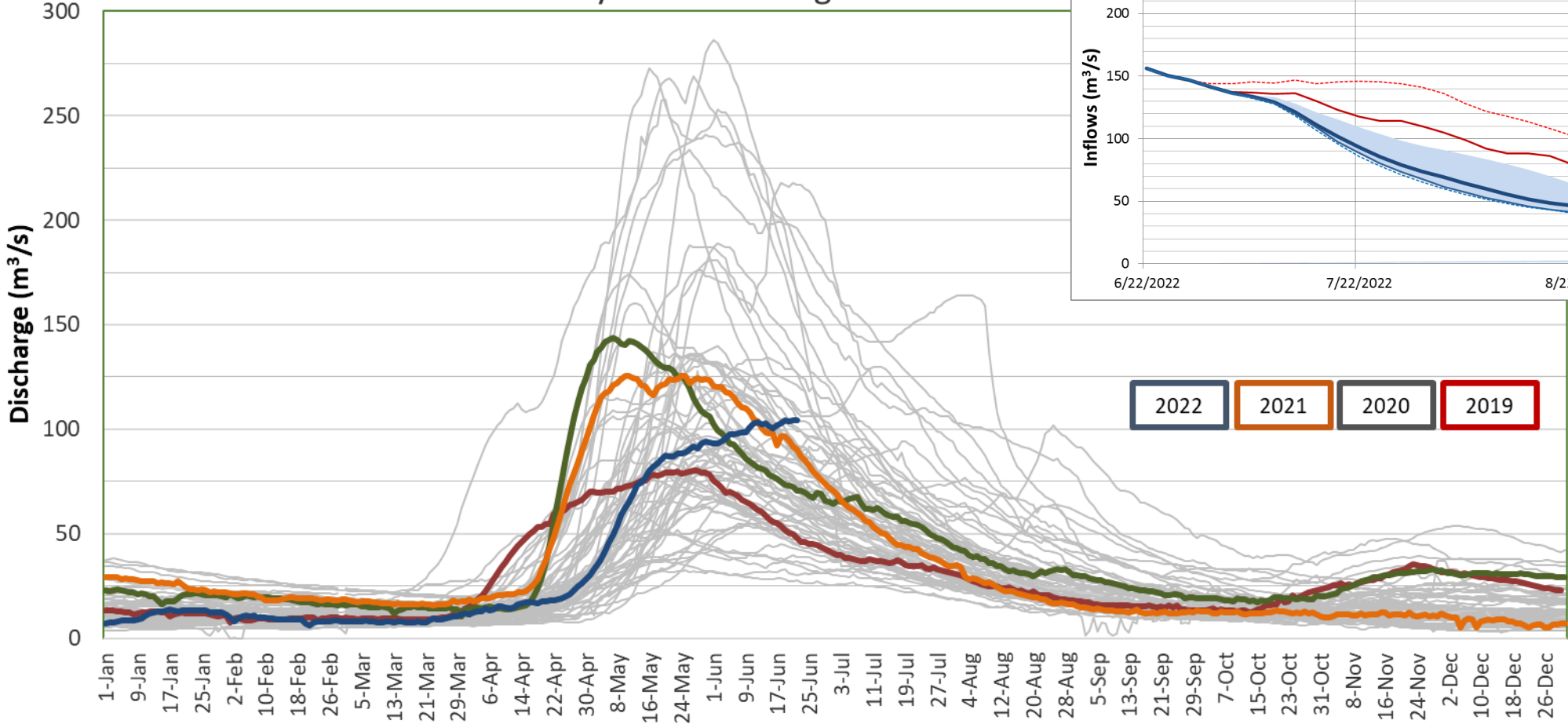


Spring Freshet Inflow Forecast



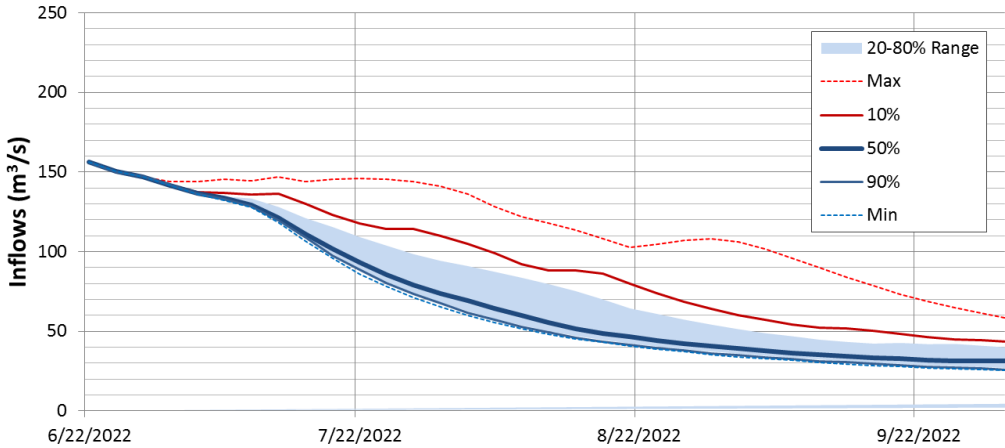
Nautley River Flows, Forecast

Nautley River discharge 1952-2022



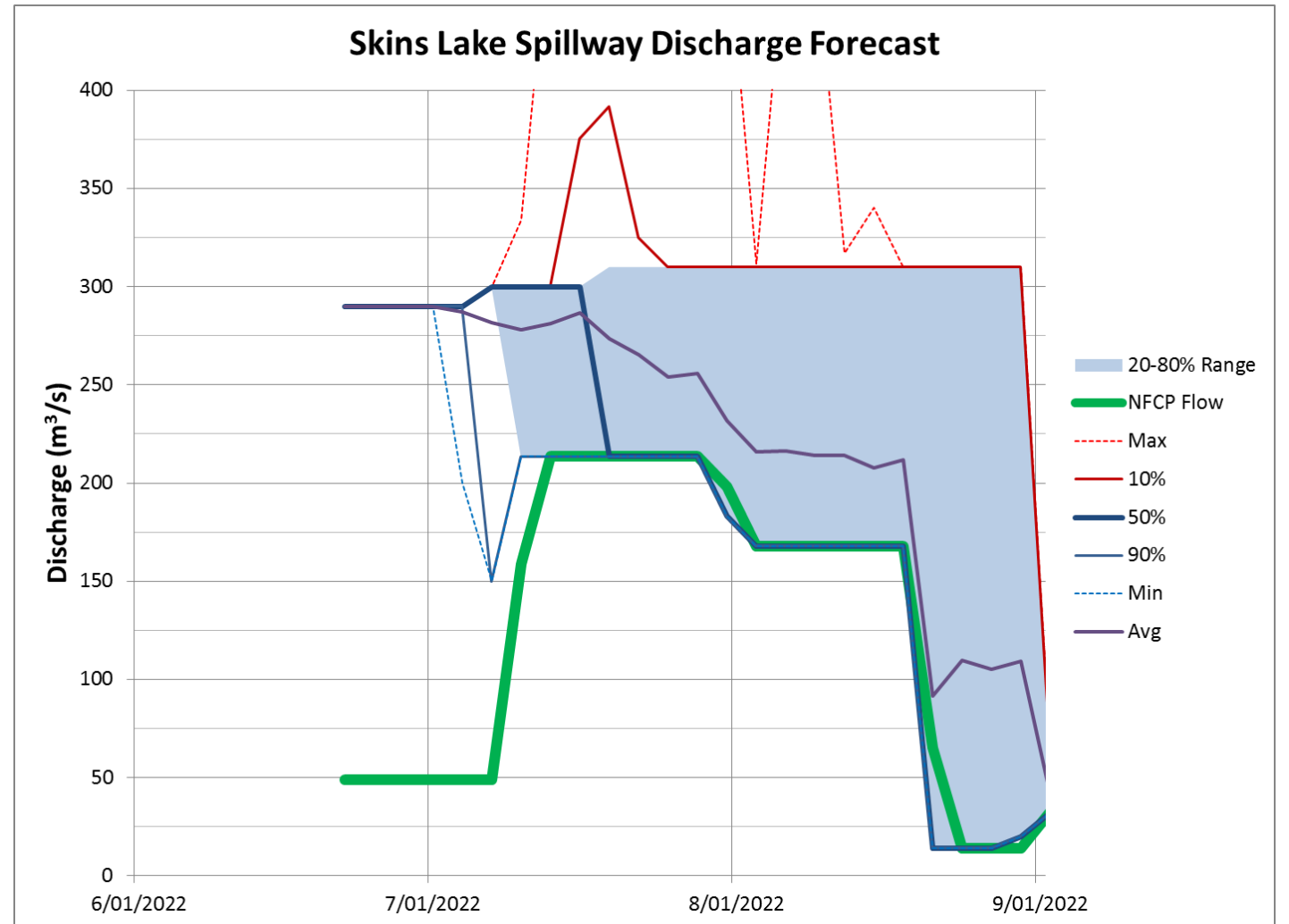
Expected Natural Inflow on Nautley/Nechako Rivers at Vanderhoof

(excludes discharge from Nechako Reservoir)

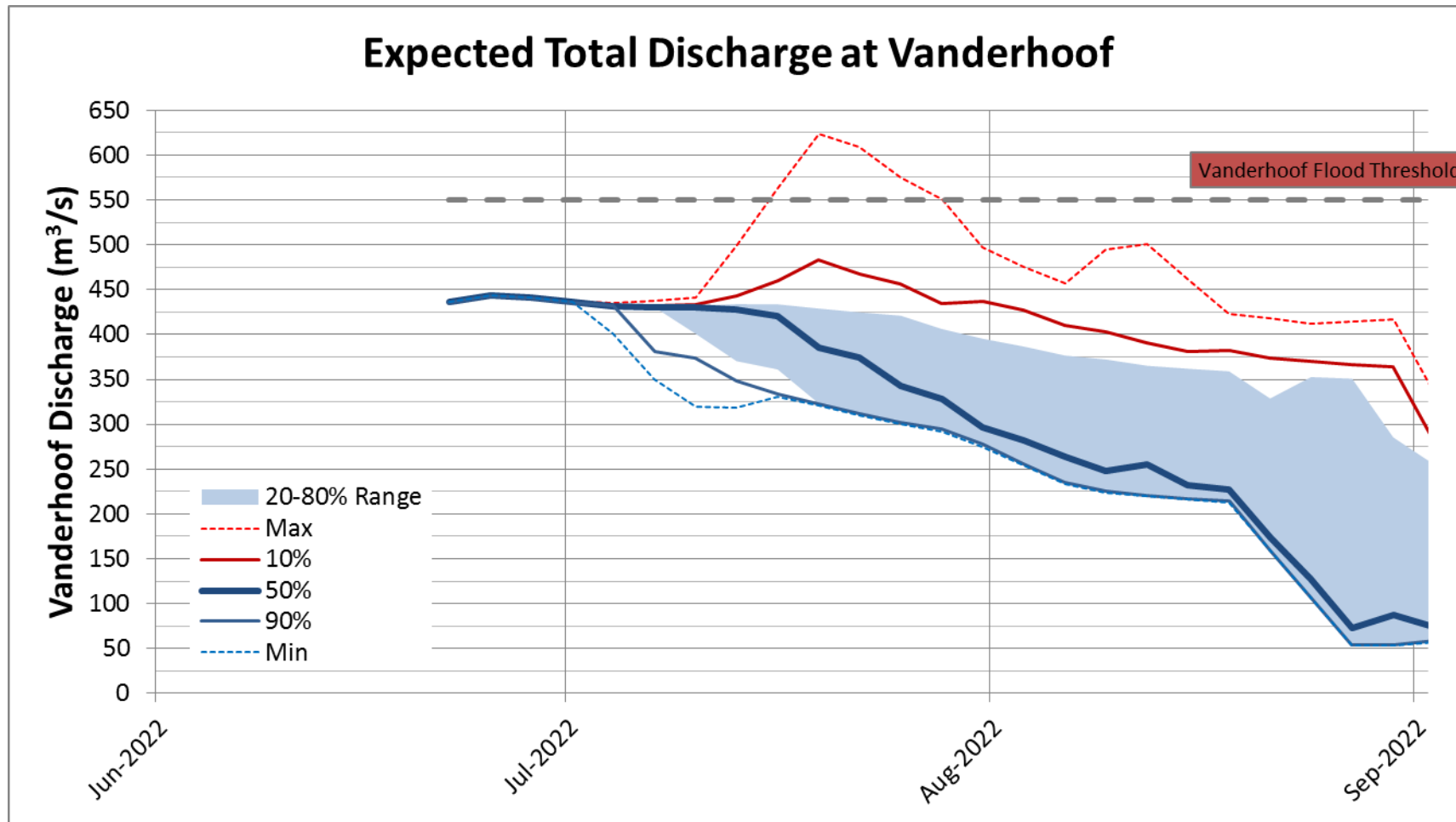


Spillway Management

- SLS discharge is currently at 290 m³/s
- Smelter Re-Start plan integrated
- Flood risk; Murray Cheslatta System 20% and Vanderhoof 5-10%

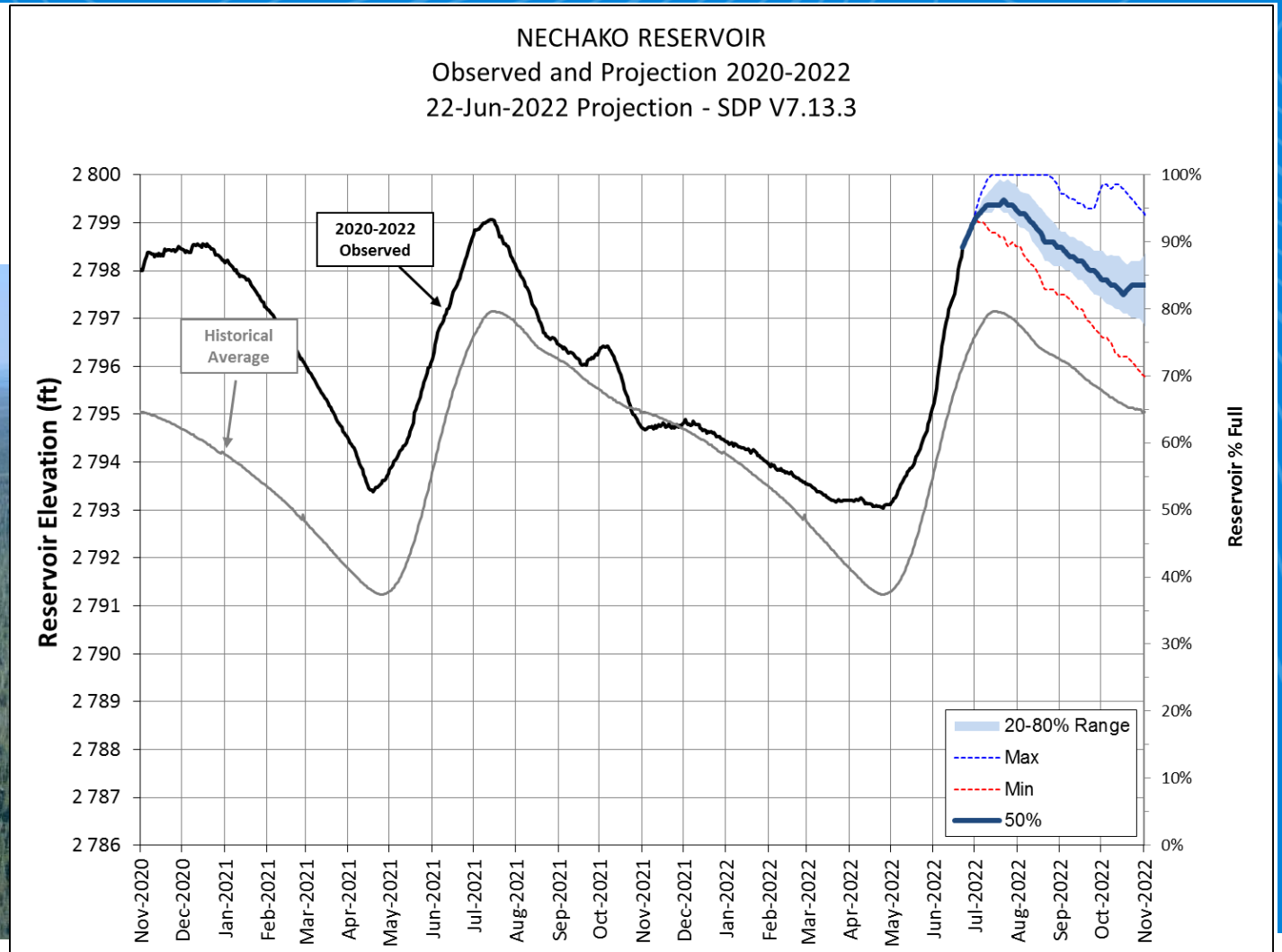


Forecast – Vanderhoof



Reservoir Level Projection

- Inflow projections are used to estimate reservoir levels over time considering current hydrology and historically observed additional snow and rain.



Next Steps – Actions

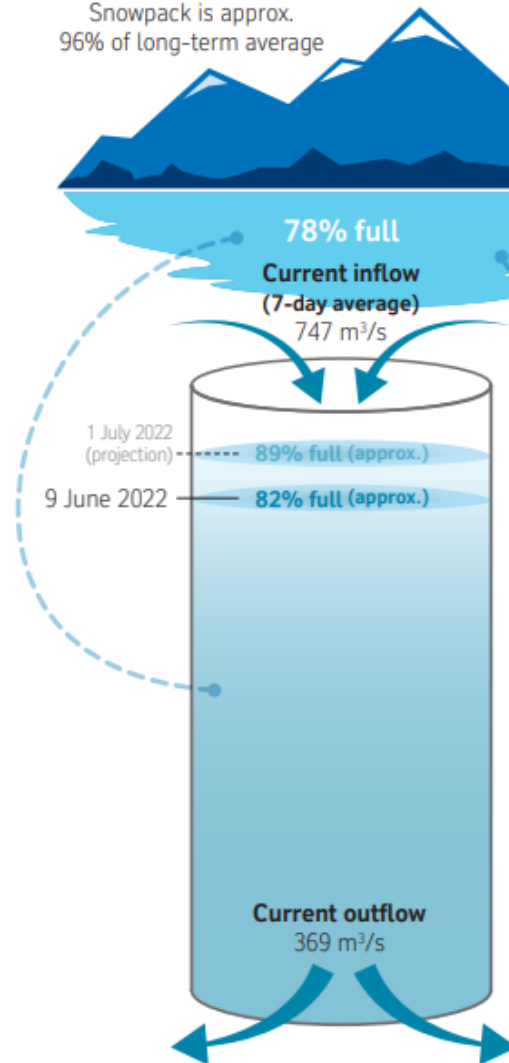


1. Model update and communications.
2. Monitoring work to learn from 2022 release
3. Continue to update on Smelter Re-Start
4. Confirm next meeting date – **29 June or 06 July**

Presentations are available on the Get Involved Nechako website under 'Our Operations'. Recordings can be requested up to 30 days following the meeting.

Current Conditions – 16 June 2022

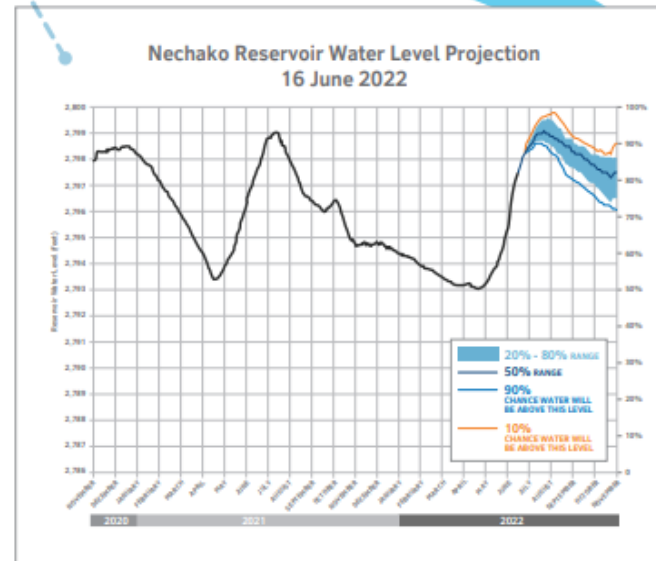
Nechako Reservoir
Snowpack is approx.
96% of long-term average



Nautley Watershed
Snowpack is approx.
0% of long-term average

Cheslatta Falls
282 m³/s

Nautley River
101 m³/s



Stuart River
Snowpack data
is not available

Vanderhoof
405 m³/s

Stuart River
250 m³/s

Prince George
652 m³/s

Fraser River

Nechako Reservoir operations update

- Skins Lake Spillway discharge will be maintained at approximately 285 m³/sec for at least another week to control the rise of the reservoir level with the ongoing Spring freshet.
- For real time information and updates visit getinvolvednechako.ca
- To subscribe to weekly updates email us at nechakoreservoirupdates@riotinto.com

Feedback & Reflections

