



RioTinto

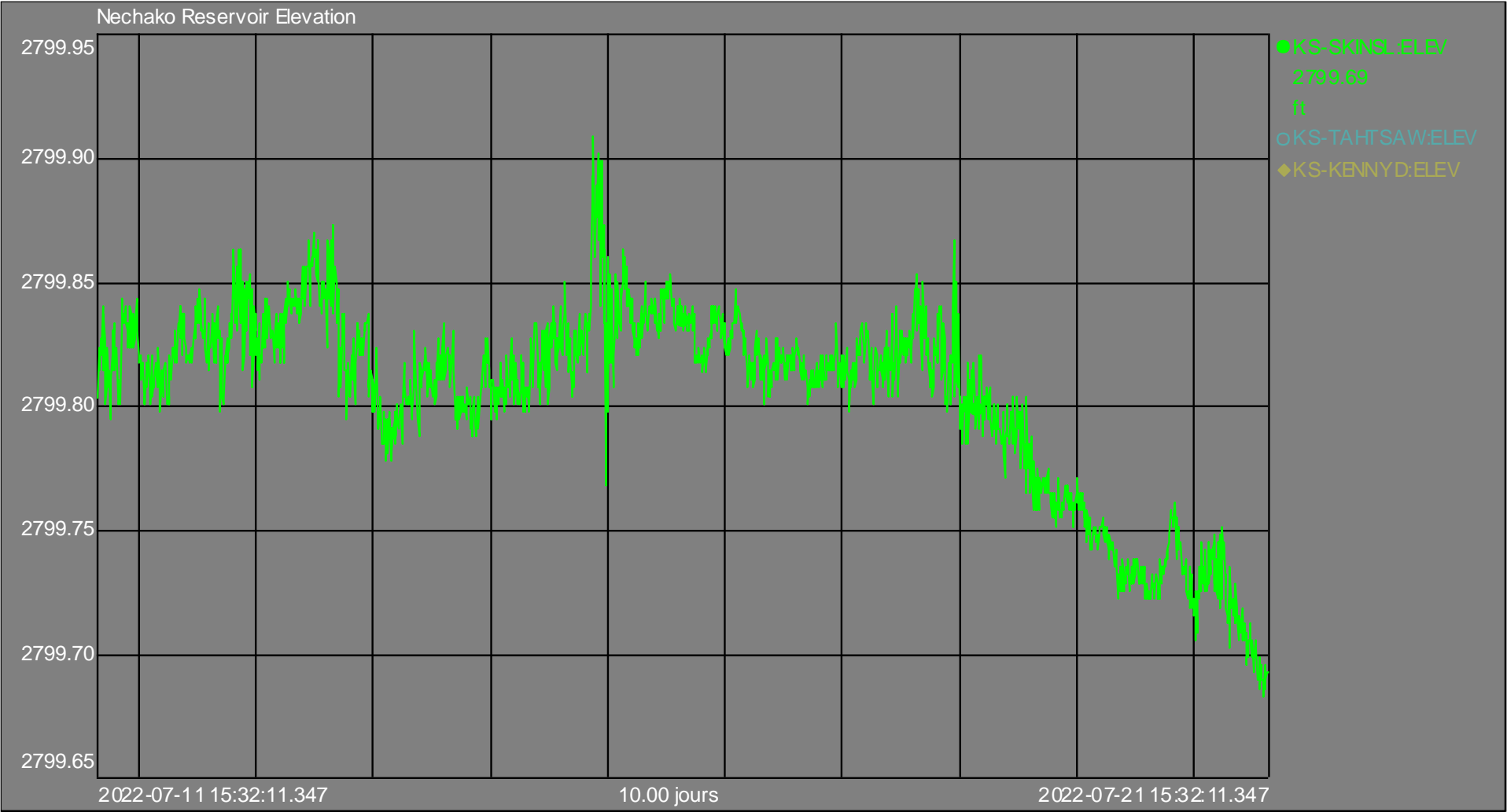
Nechako Reservoir / River / Freshet Information Sharing – Community Leaders

21 July 2022

Prepared by Andrew Czornohalan, Gabrielle
Dallaire, and Alec Mercier

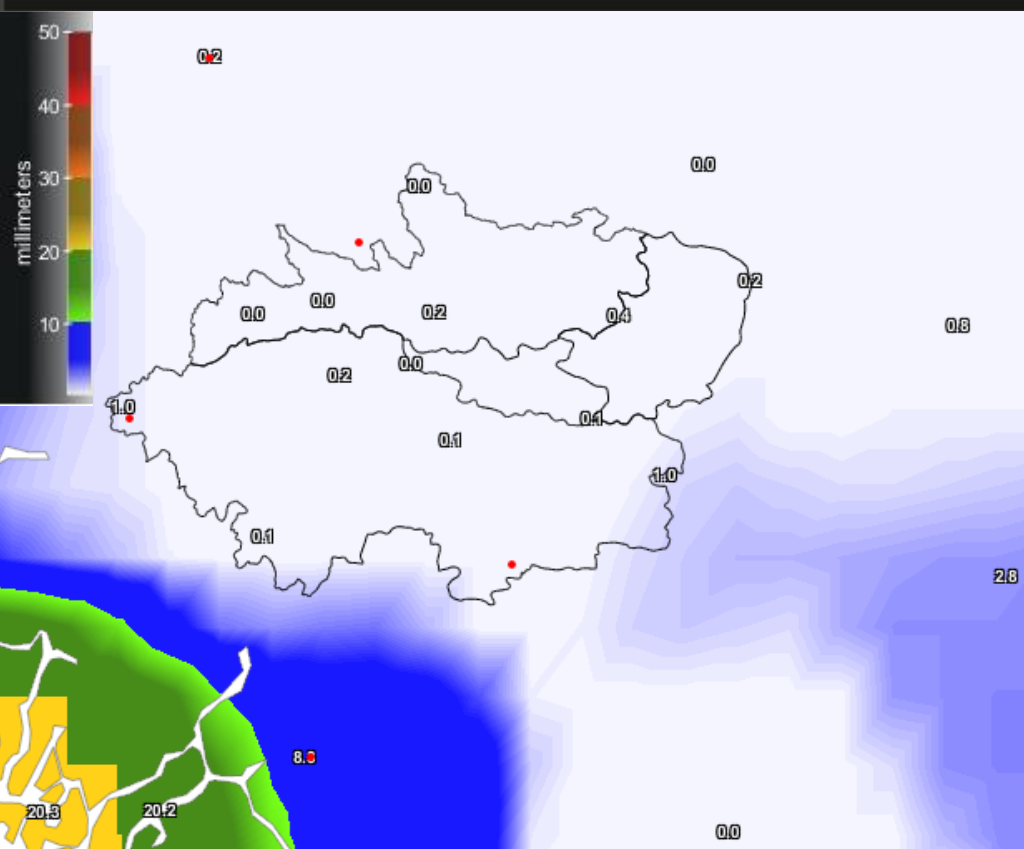
Reservoir Elevation - Last 20 days

Current reservoir
level: 2799.69 ft
Maximum: 2800.0 ft



Observed Precipitation, Inflows vs Historical

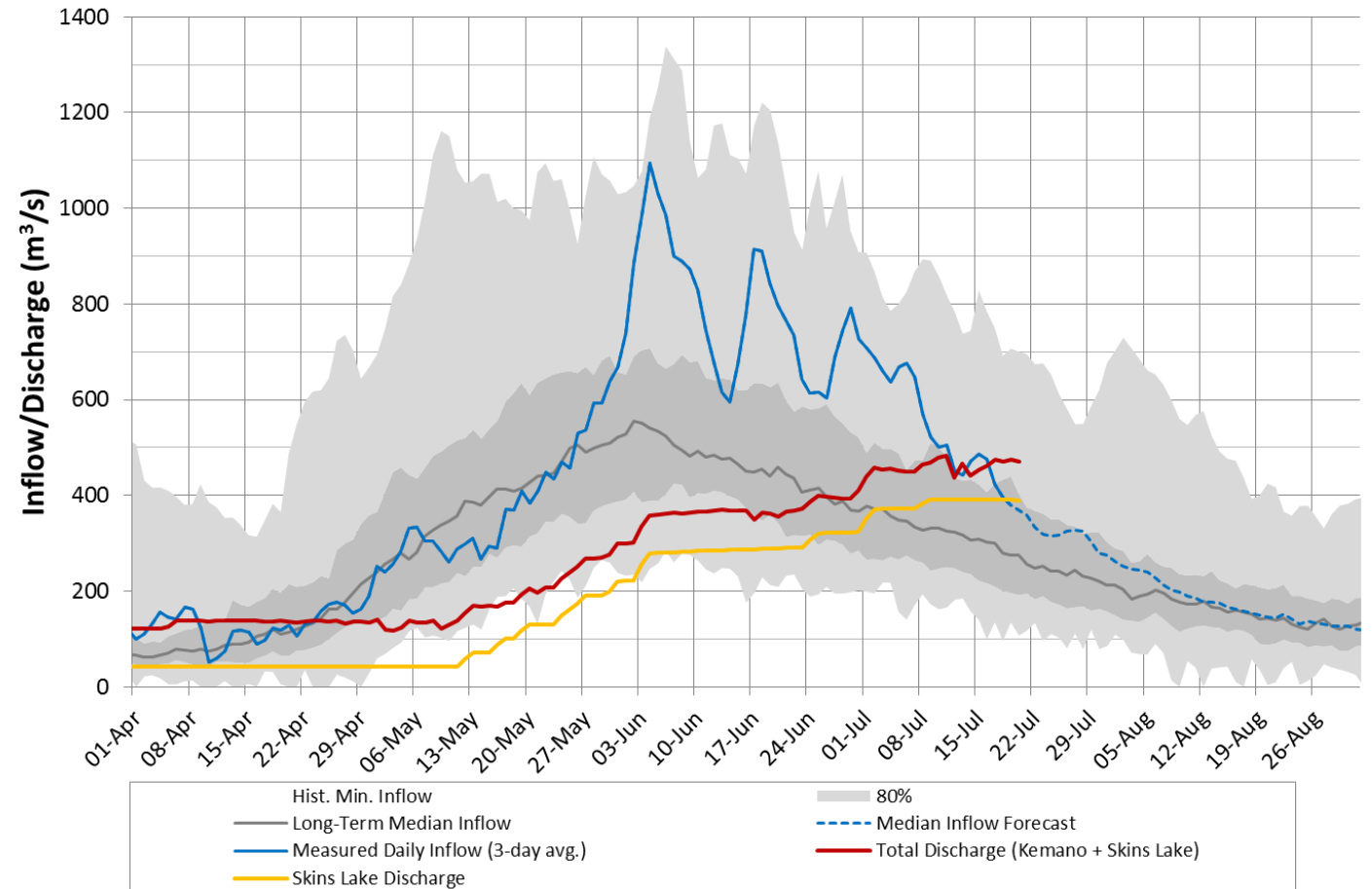
3-day cumulative precipitations



Area-averaged precipitation

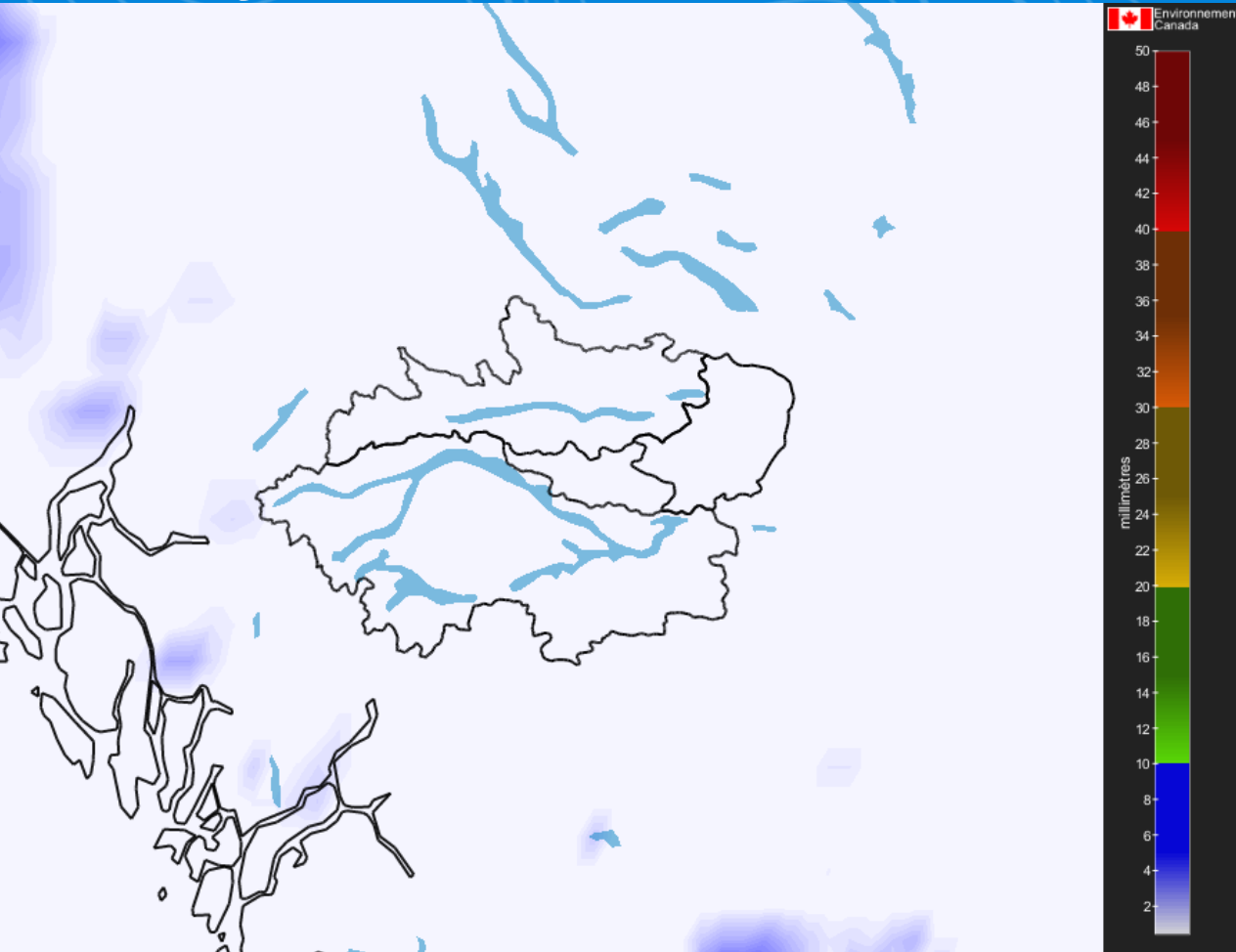
Nechako reservoir	0.3 mm
Nautley watershed	0.2 mm

Nechako Reservoir Operation Observed Inflow and Discharge 2021-2022



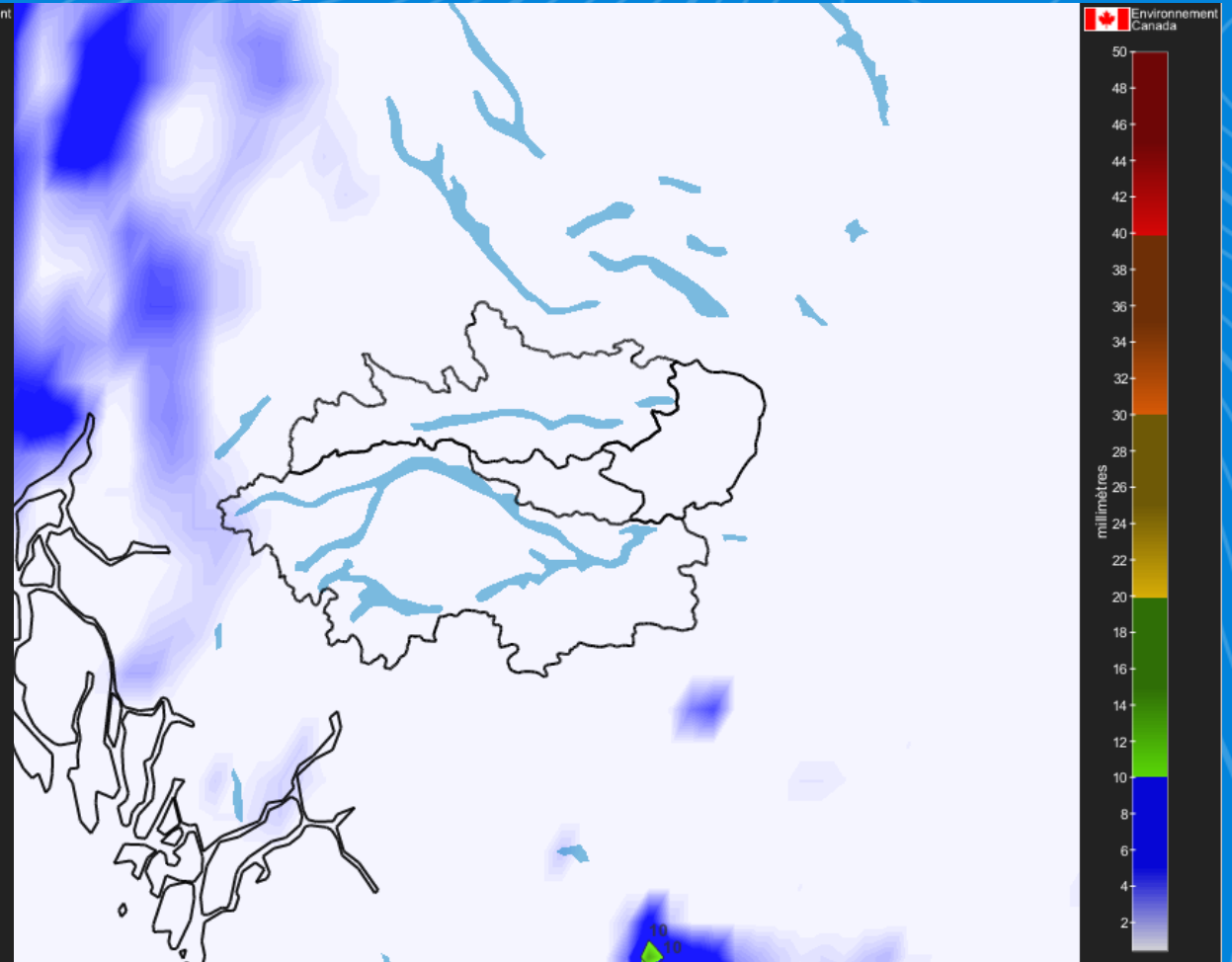
Weather Forecast

3 days



Expected: ≈ 0 mm

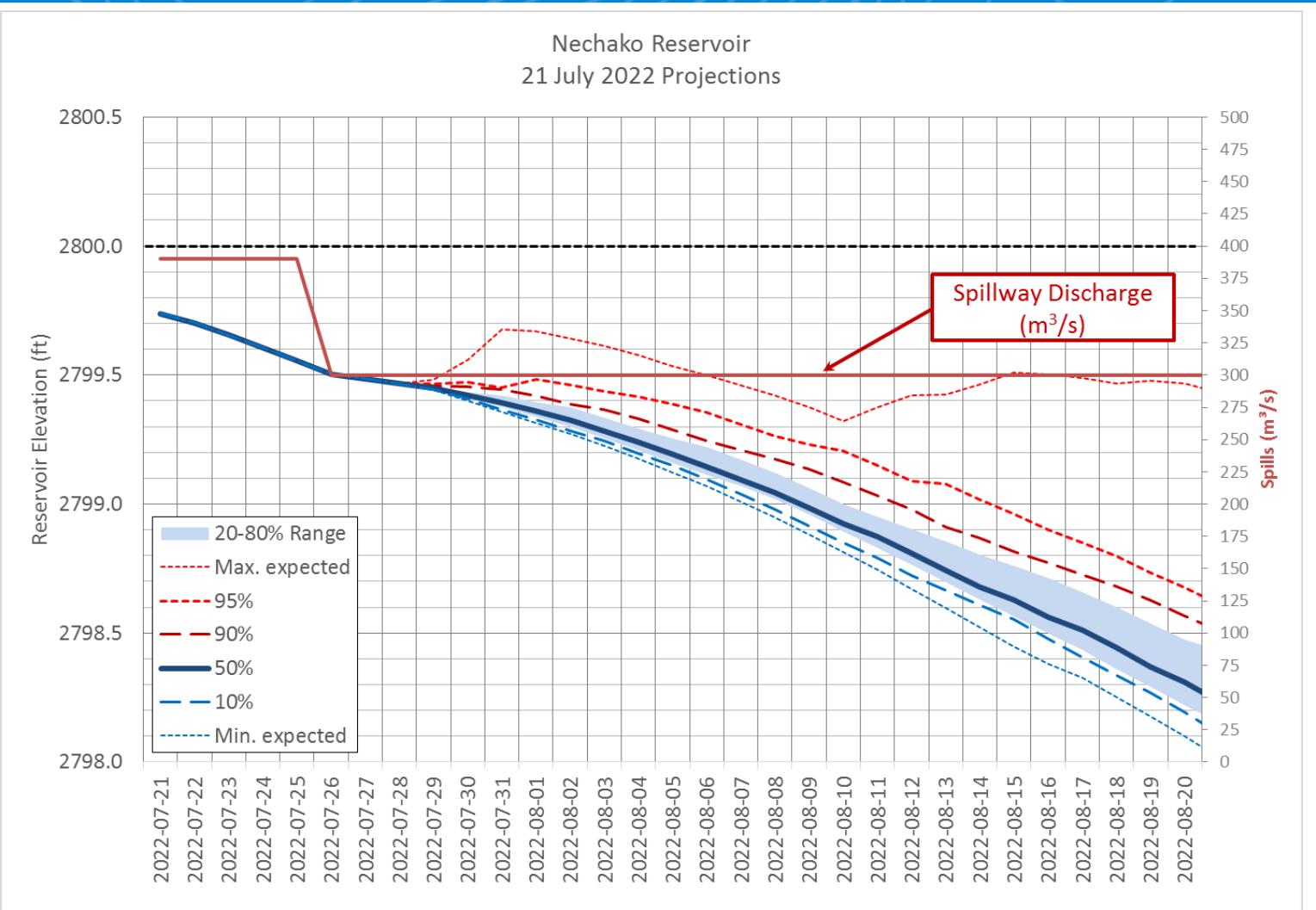
7 days



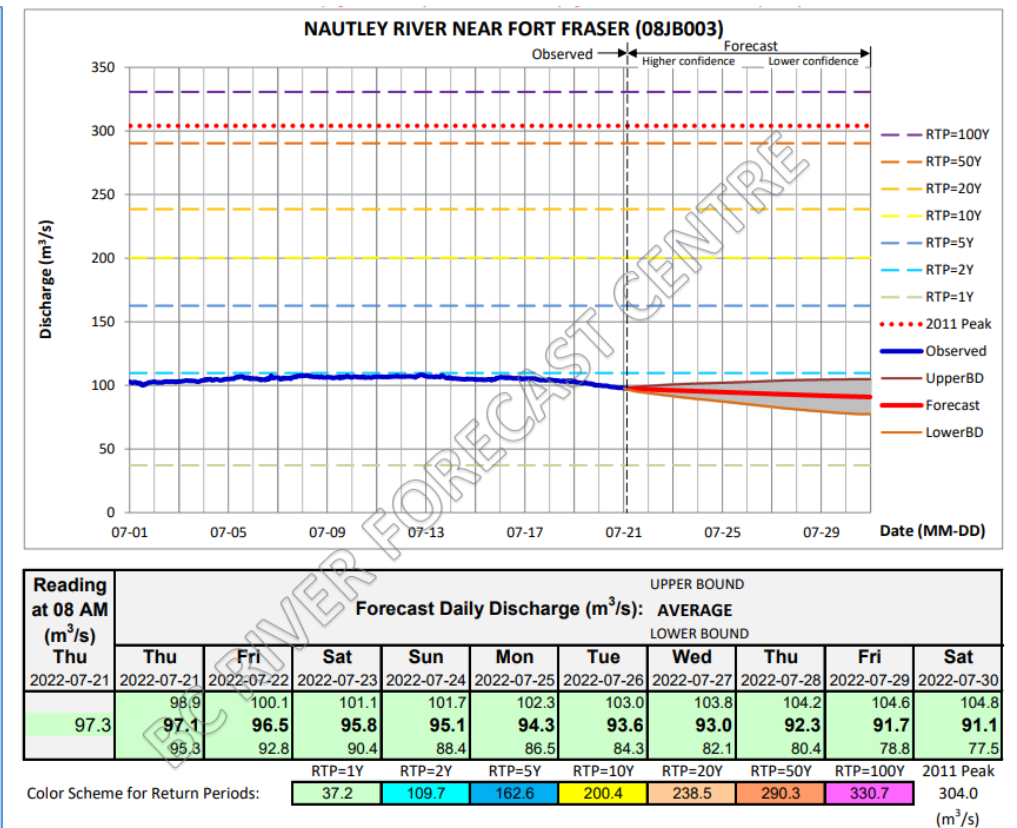
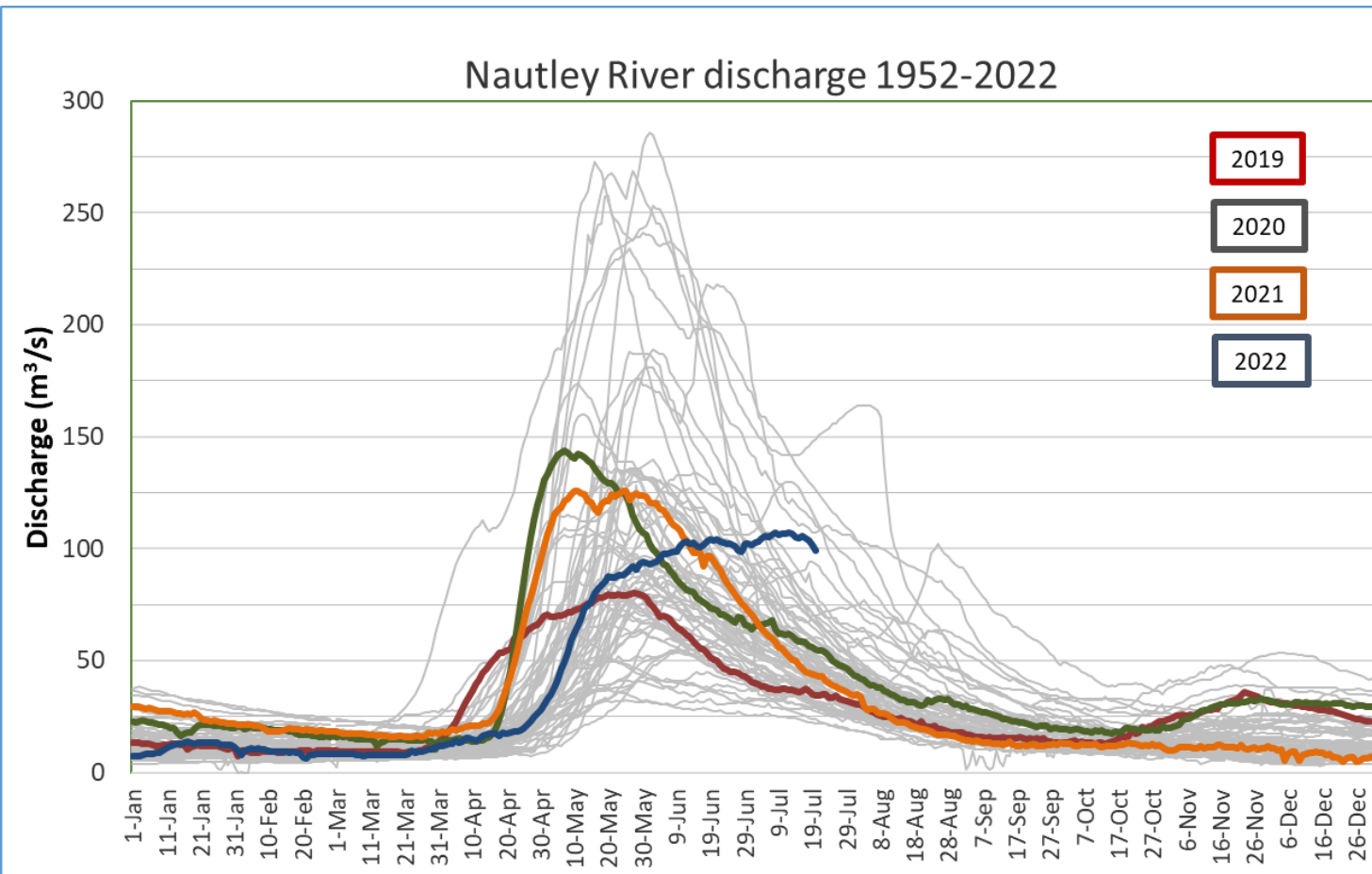
Expected: ≈ 0 mm

Reservoir Level Projection – 390 then 300 m³/s

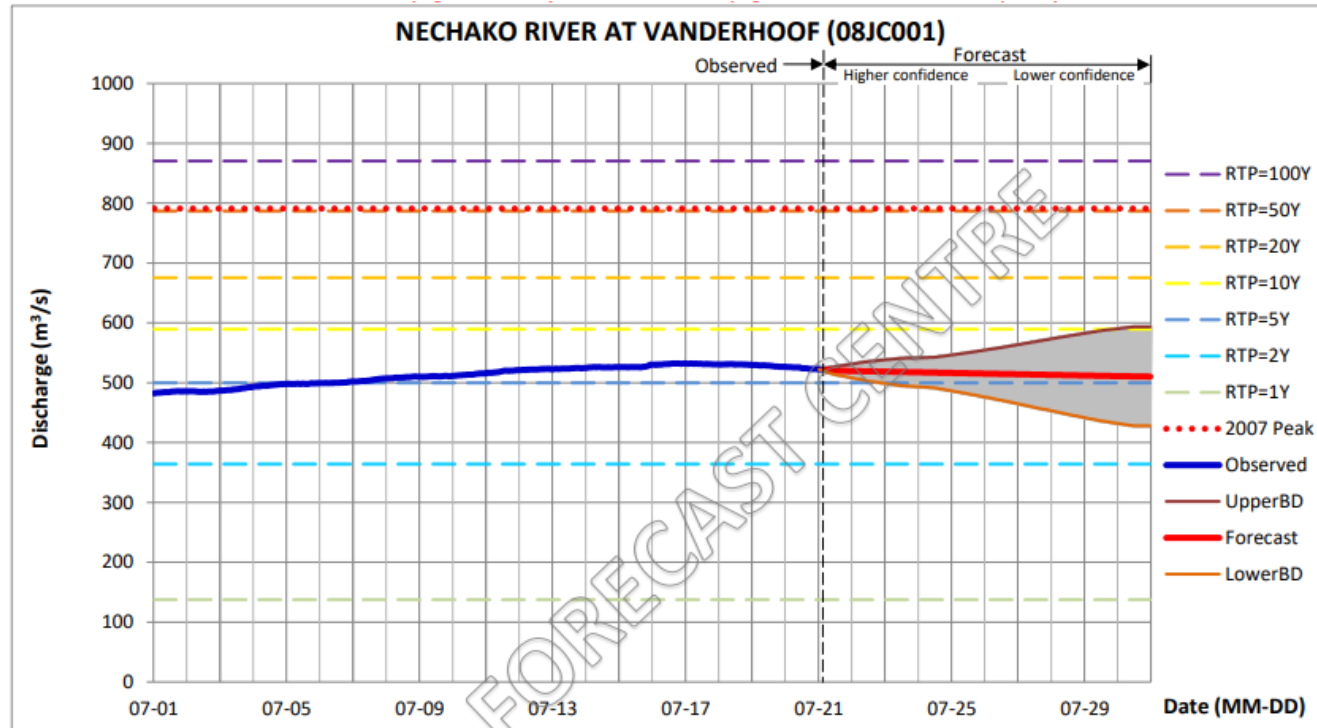
- SLS discharge maintained at 390 m³/s until 25 July, then 300 m³/s
- Risk of exceeding maximum operating reservoir level : Very Low (<5%)
- Reached peak: 2799.91 ft. (15 July))
- Reservoir level is expected to continue decreasing in the next few days.
- Projections is 0 mm over 3 days, than also 0 mm for the rest of the week.



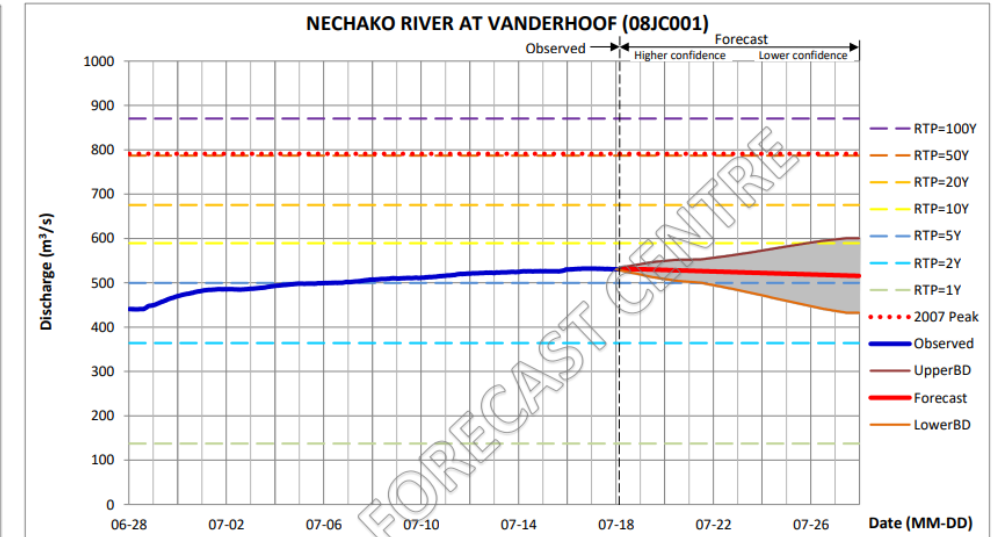
Nautley River Flows, Forecast



BC River Forecast Center – Vanderhoof



Reading at 06 AM (m³/s) Thu	Forecast Daily Discharge (m³/s): AVERAGE										
	UPPER BOUND										
	LOWER BOUND										
	Thu	Fri	Sat	Sun	Mon	Tue	Wed	Thu	Fri	Sat	
2022-07-21	2022-07-21	2022-07-22	2022-07-23	2022-07-24	2022-07-25	2022-07-26	2022-07-27	2022-07-28	2022-07-29	2022-07-30	
	525.6	535.2	540.8	542.2	549.9	558.5	568.1	577.7	586.8	593.3	
521.0	520.2	519.1	518.0	516.9	515.8	514.7	513.6	512.6	511.5	510.6	
	513.9	503.0	495.2	491.6	481.8	471.0	459.2	447.5	436.5	428.0	
Color Scheme for Return Periods:											2007 Peak
RTP=1Y RTP=2Y RTP=5Y RTP=10Y RTP=20Y RTP=50Y RTP=100Y											791.0
137.4 364.1 499.7 589.4 675.5 786.9 870.4											(m³/s)



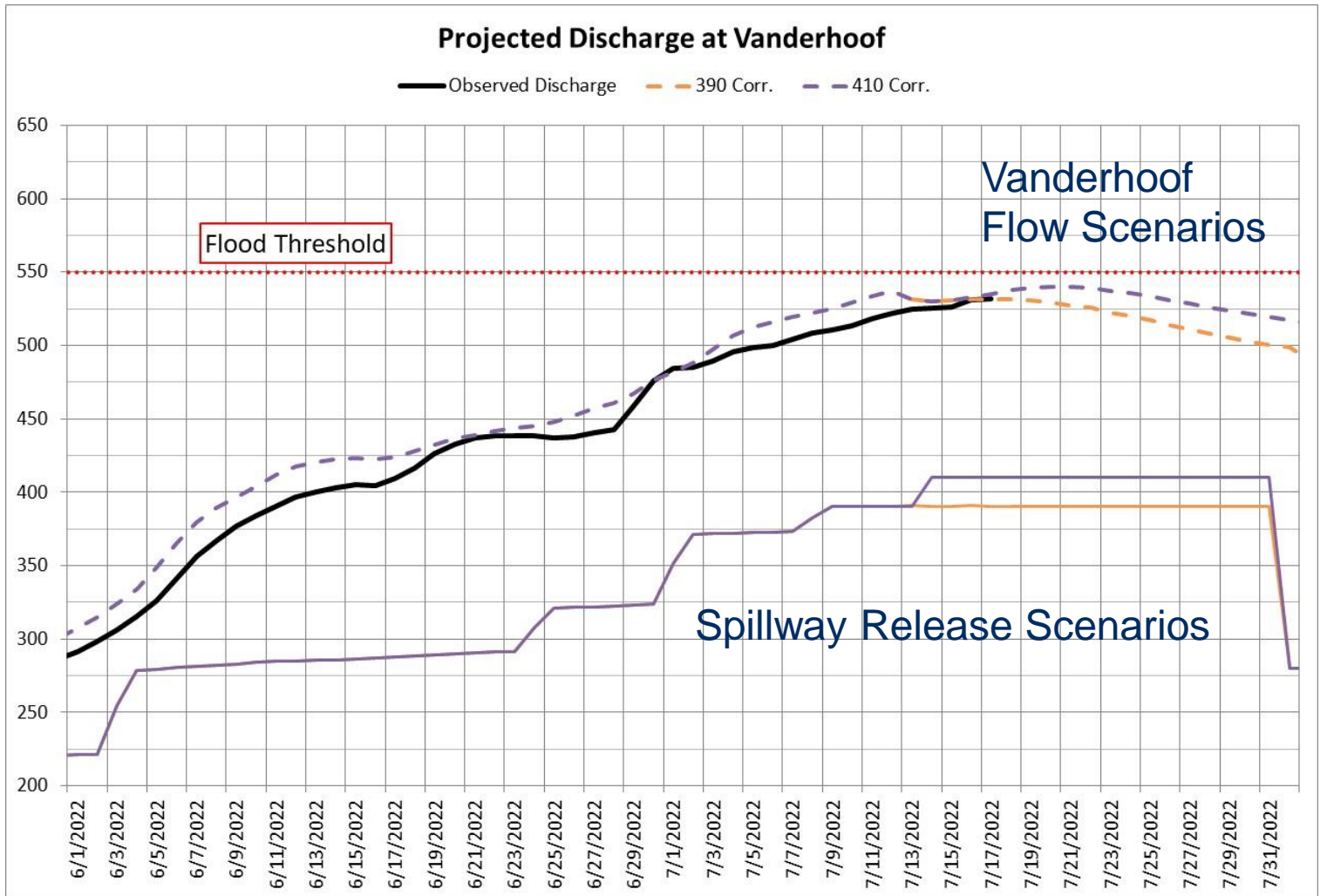
Reading at 08 AM (m³/s)	Forecast Daily Discharge (m³/s): AVERAGE										
	UPPER BOUND										
	LOWER BOUND										
	Mon	Tue	Wed	Thu	Fri	Sat	Sun	Mon	Tue	Wed	
2022-07-18	2022-07-18	2022-07-19	2022-07-20	2022-07-21	2022-07-22	2022-07-23	2022-07-24	2022-07-25	2022-07-26	2022-07-27	
531.0	536.8	546.5	551.7	552.5	559.7	567.8	577.0	586.1	594.6	600.4	
	530.7	529.9	528.1	526.4	524.7	523.0	521.3	519.7	518.0	516.4	
	524.7	513.2	504.6	500.3	489.8	478.3	465.9	453.5	441.7	432.6	

	RTP=1Y	RTP=2Y	RTP=5Y	RTP=10Y	RTP=20Y	RTP=50Y	RTP=100Y	2007 Peak
Color Scheme for Return Periods:	137.4	364.1	499.7	589.4	675.5	786.9	870.4	791.0
								(m ³ /s)

Remark: This station is labeled as "regulated", and the forecast is the sum of natural flows and extended regulated flow from 08JA017.

Spillway Management – Vanderhoof Forecast

- SLS discharge is currently 390 m³/s



Focus & Actions

- Surcharge Authorization
- Public Engagement Meeting
- Monitoring and Learning about High Water – Alec on the river today
- Next Meeting – Discussion – do we revert to two weekly @1200 Wednesday
- De-Brief and Lessons Learnt Workshop – Late August

Feedback & Reflections

