

Rio Tinto Water Engagement Initiative

Q2 update

June 26, 2023



RioTinto

An Apology

<Date>



The Smelter has
reached 90%
operational capacity



7-year Dam Safety Review Underway



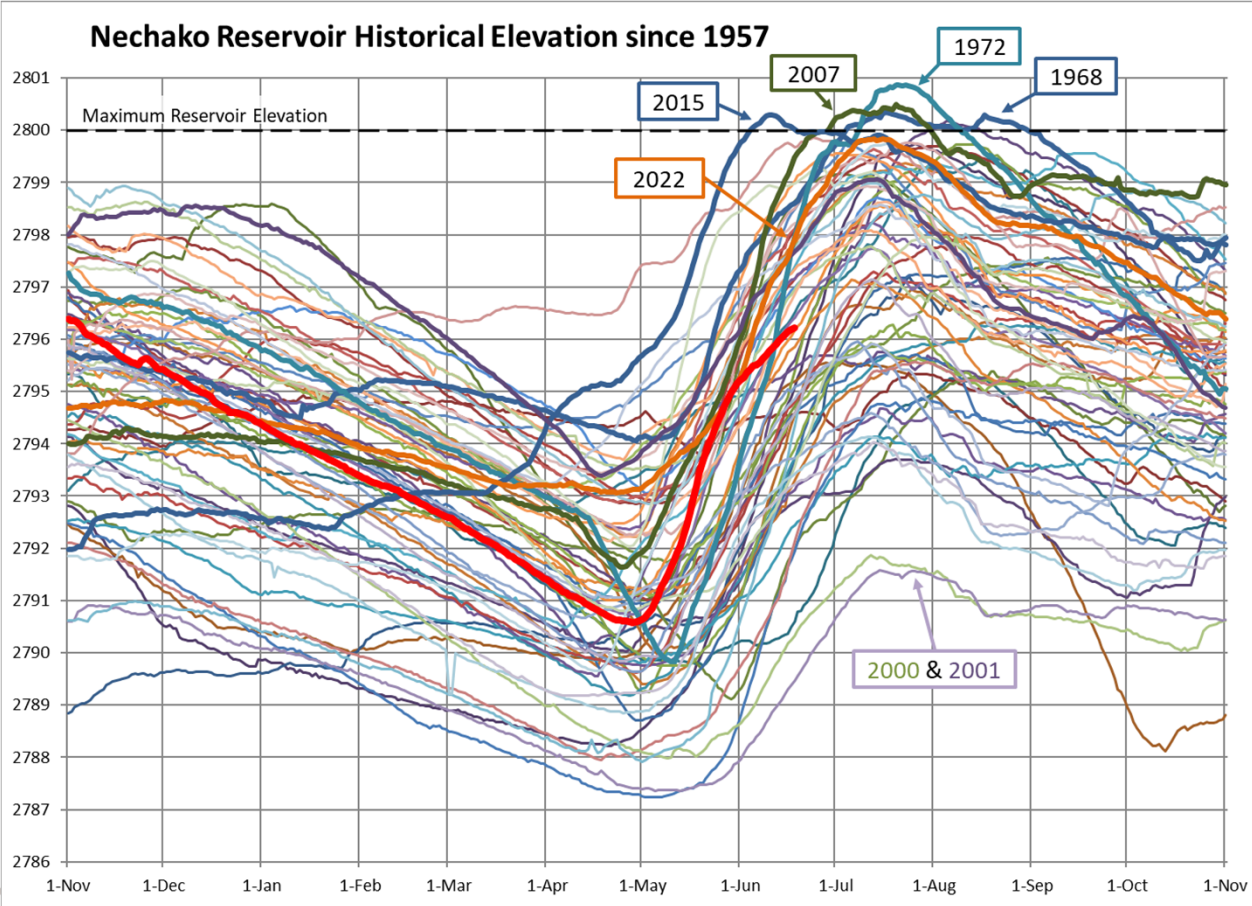
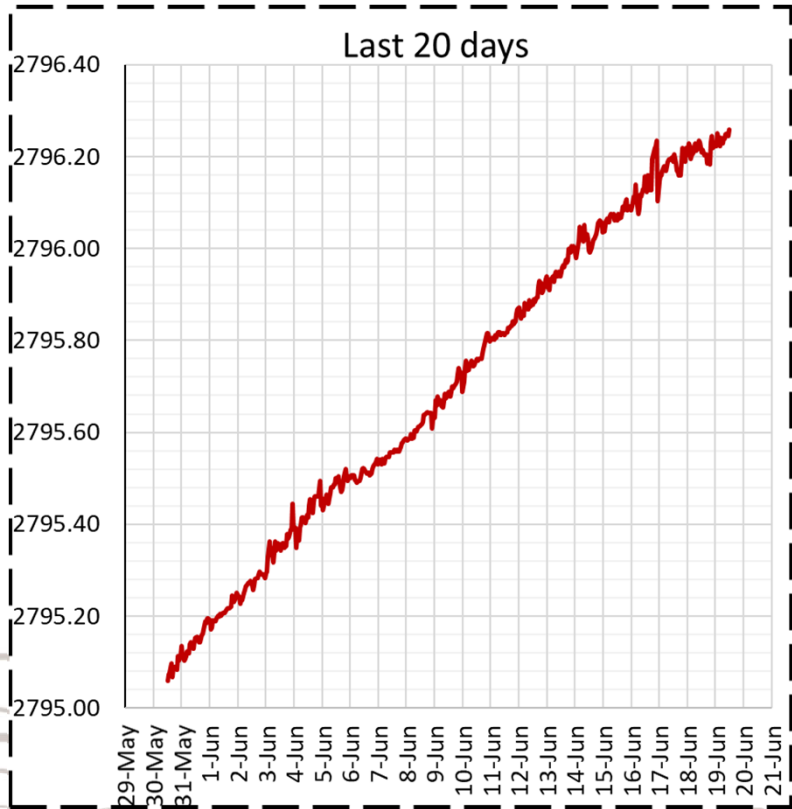
2023 Hydrology Update



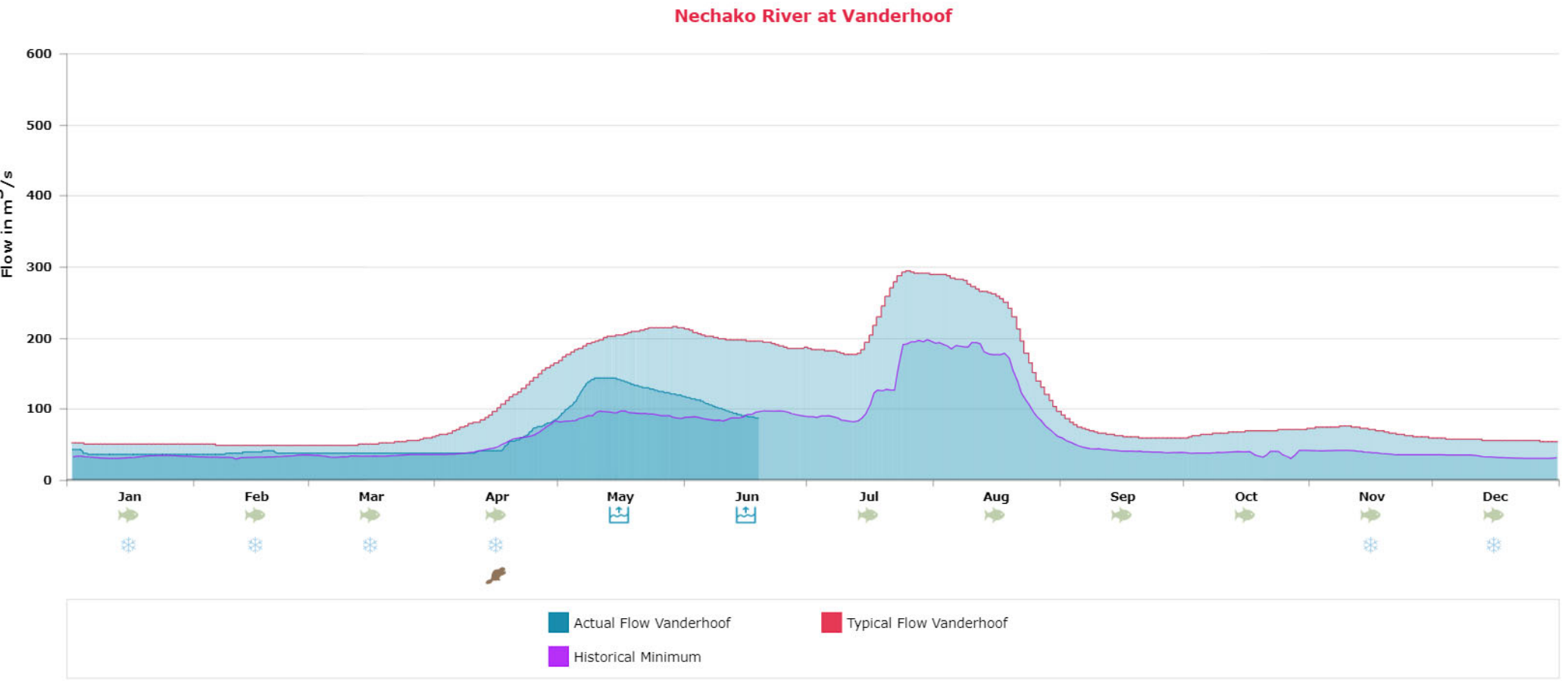
Reservoir Elevation: May 29 to June 20

Current reservoir level

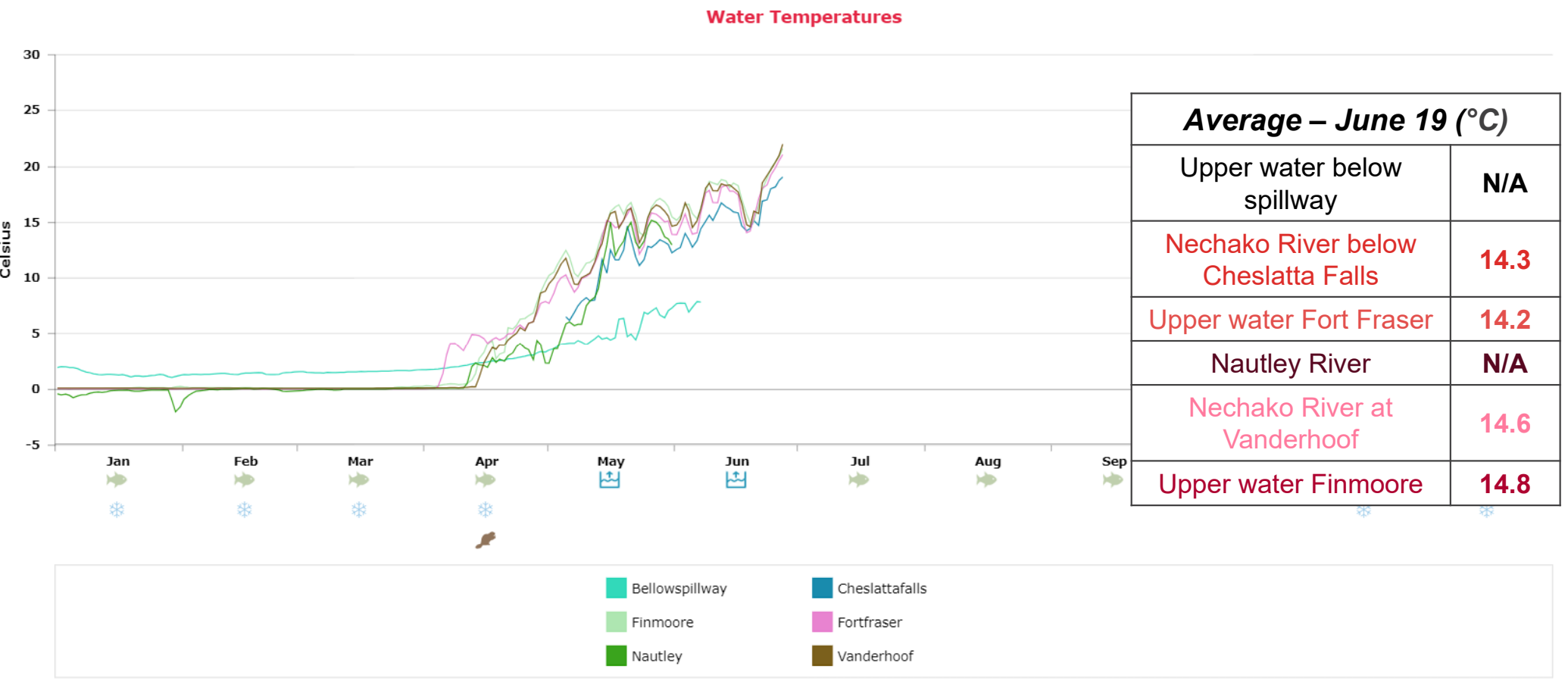
2796.25 ft



Flows:

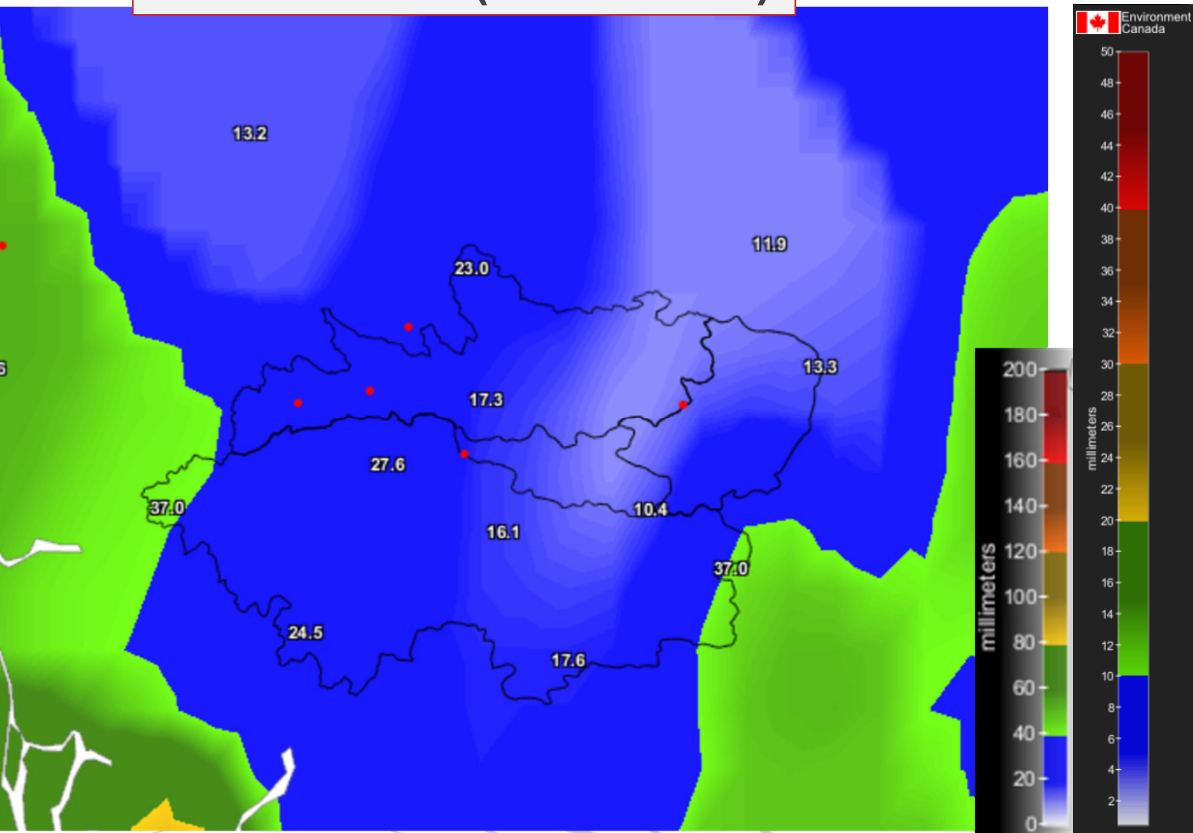


Observed Water Temperatures:

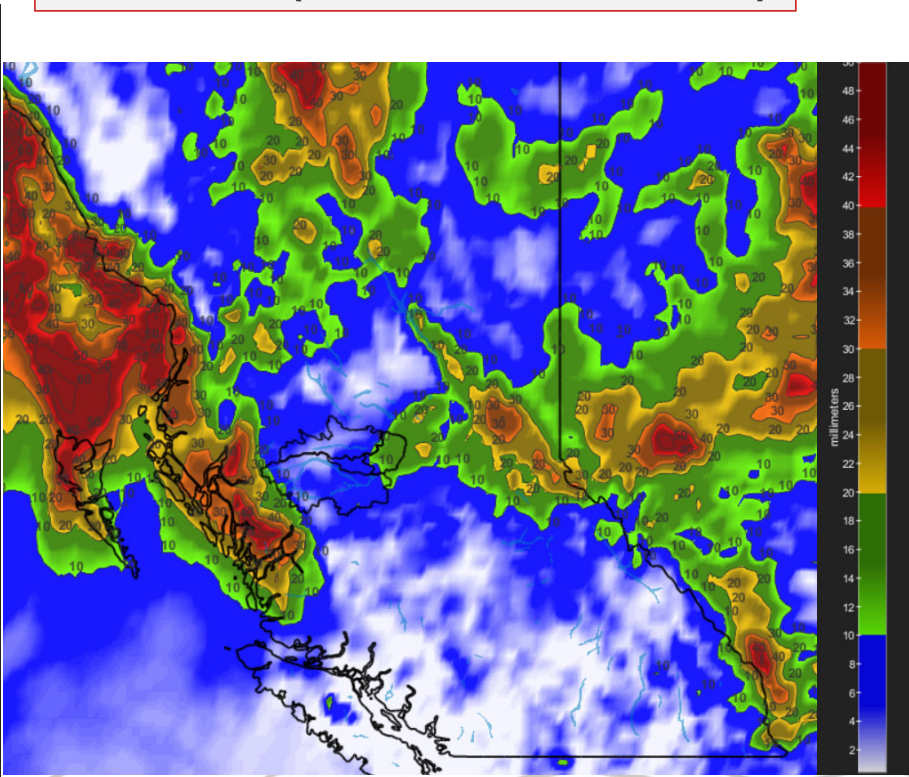


Past and Future Cumulative Precipitation

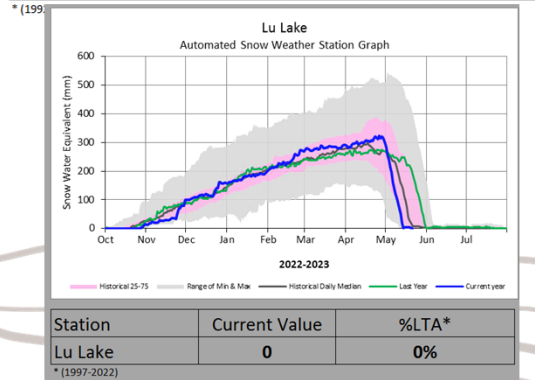
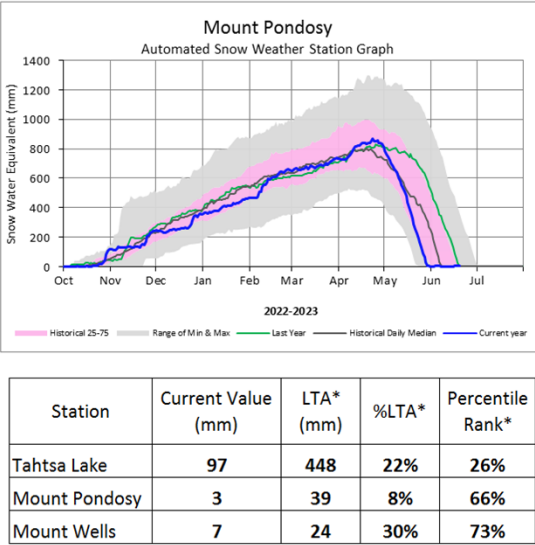
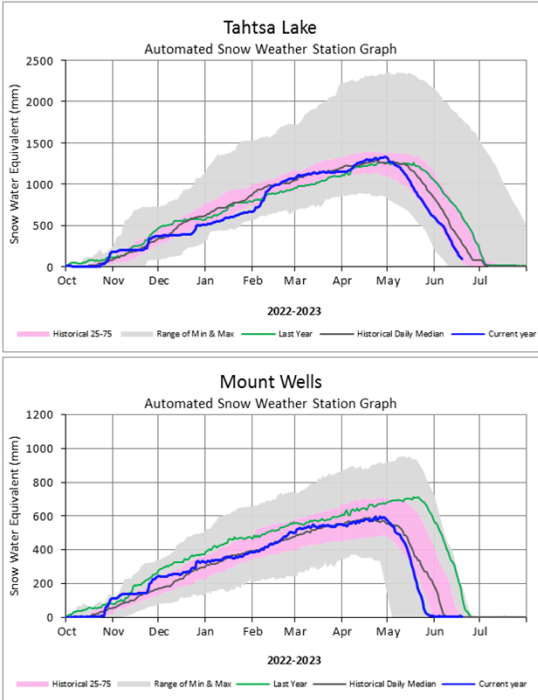
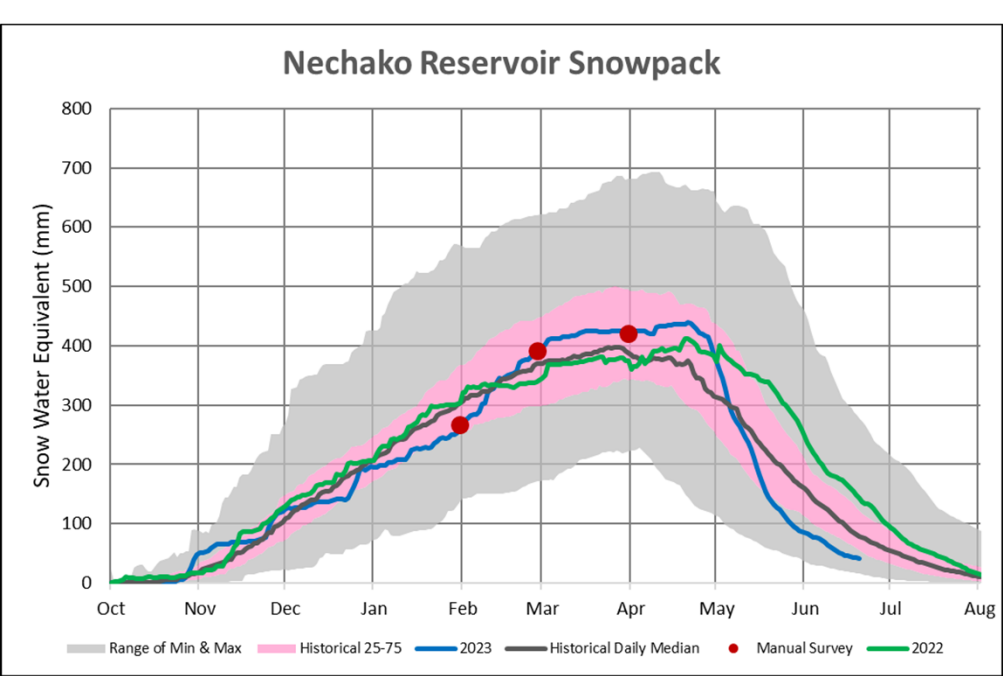
Observation (last month)



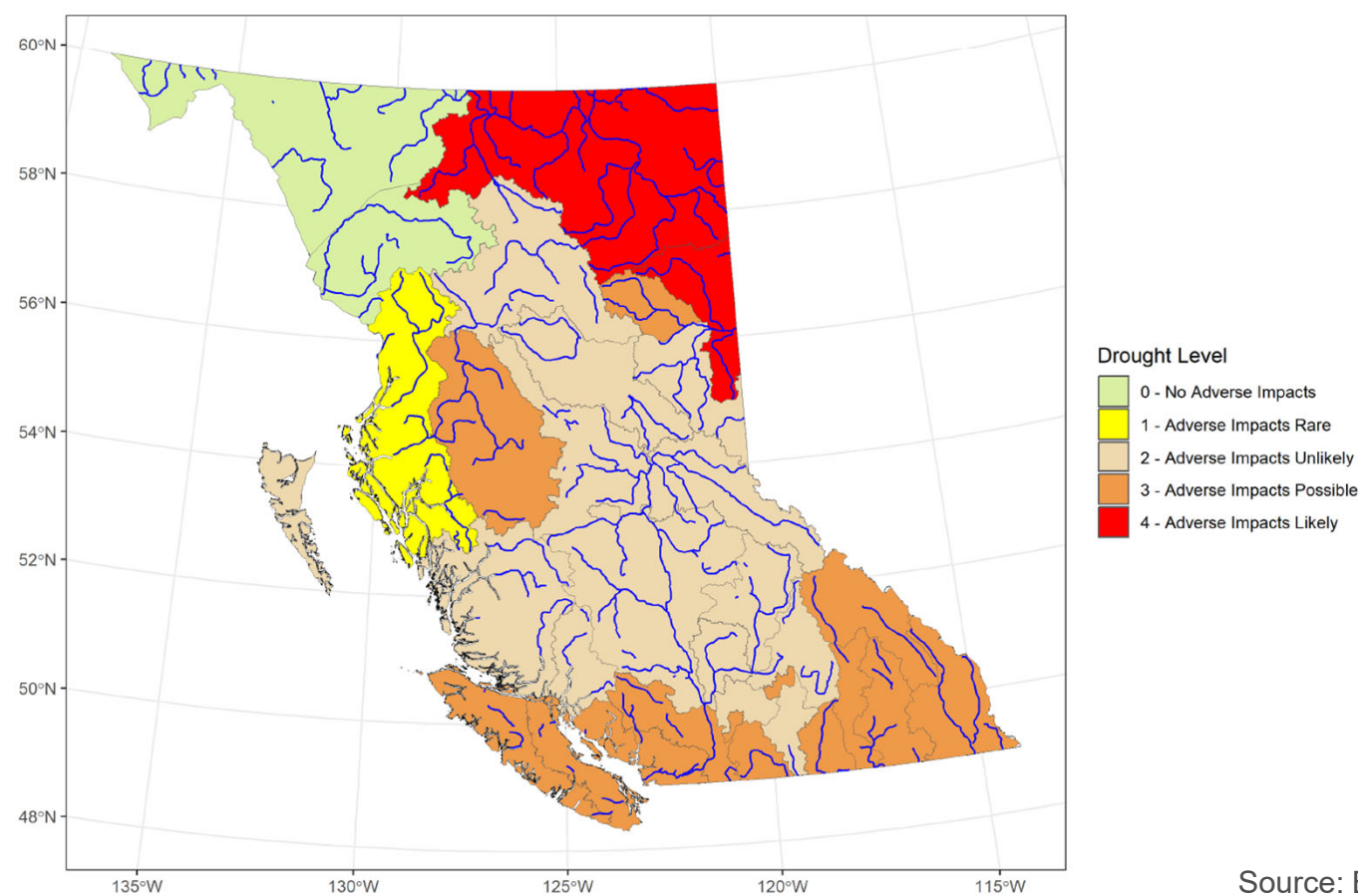
Forecast (June 20 – June 30)



Snowpack as of June 20

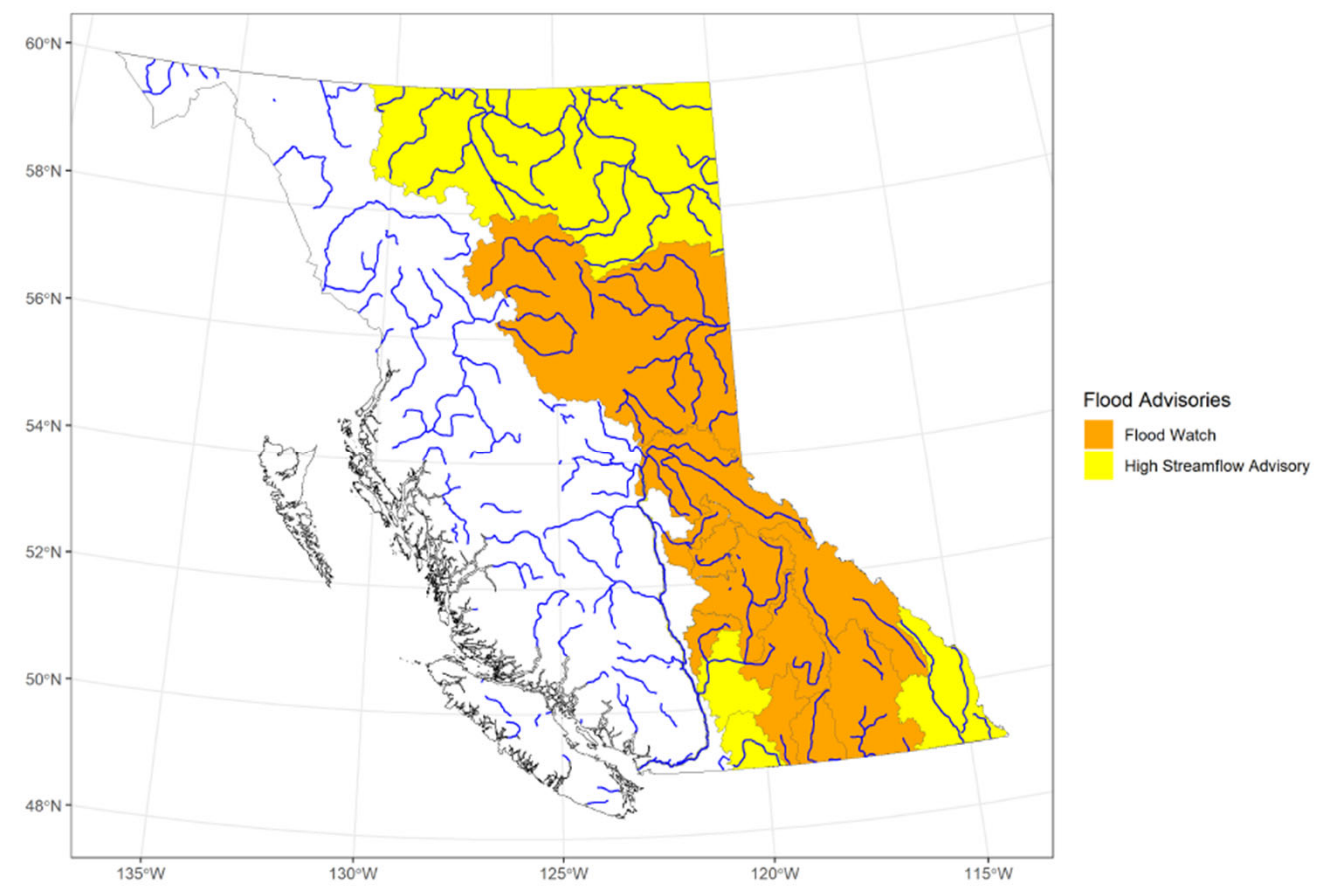


Provincial Advisories - Drought



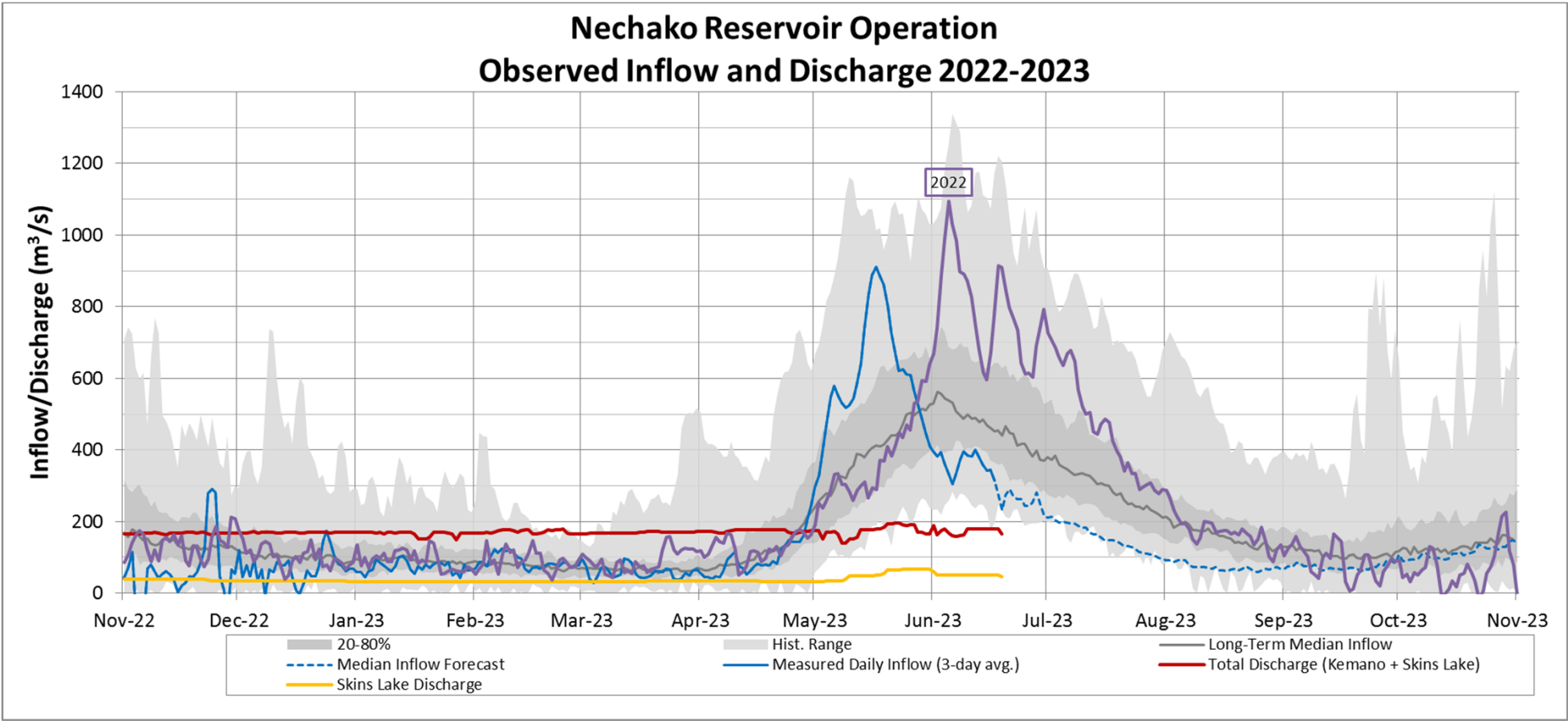
Source: British Columbia Drought Information Portal
Water Management Branch – Ministry of Forests

Provincial Advisories - Flood

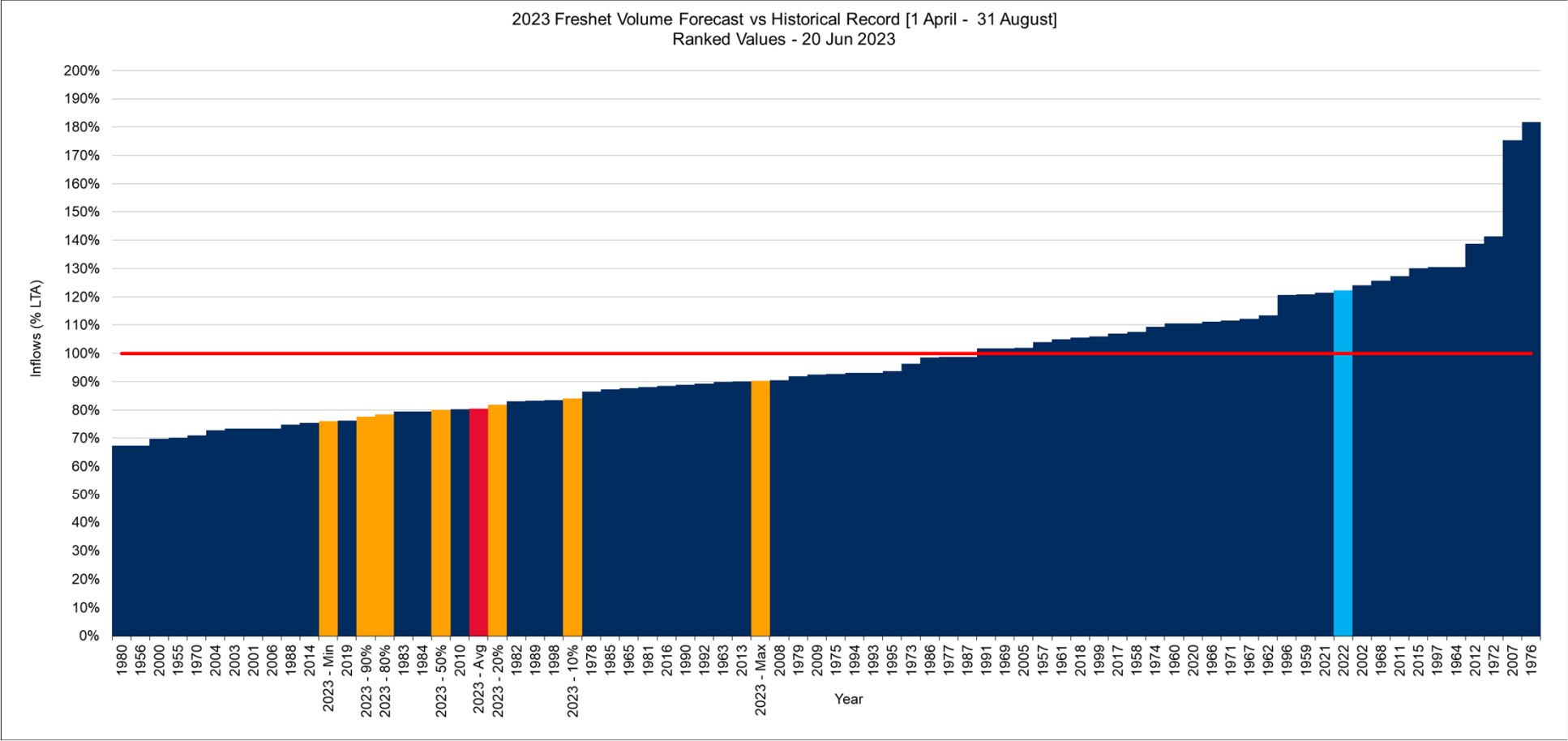


Source: BC River Forecast Center.

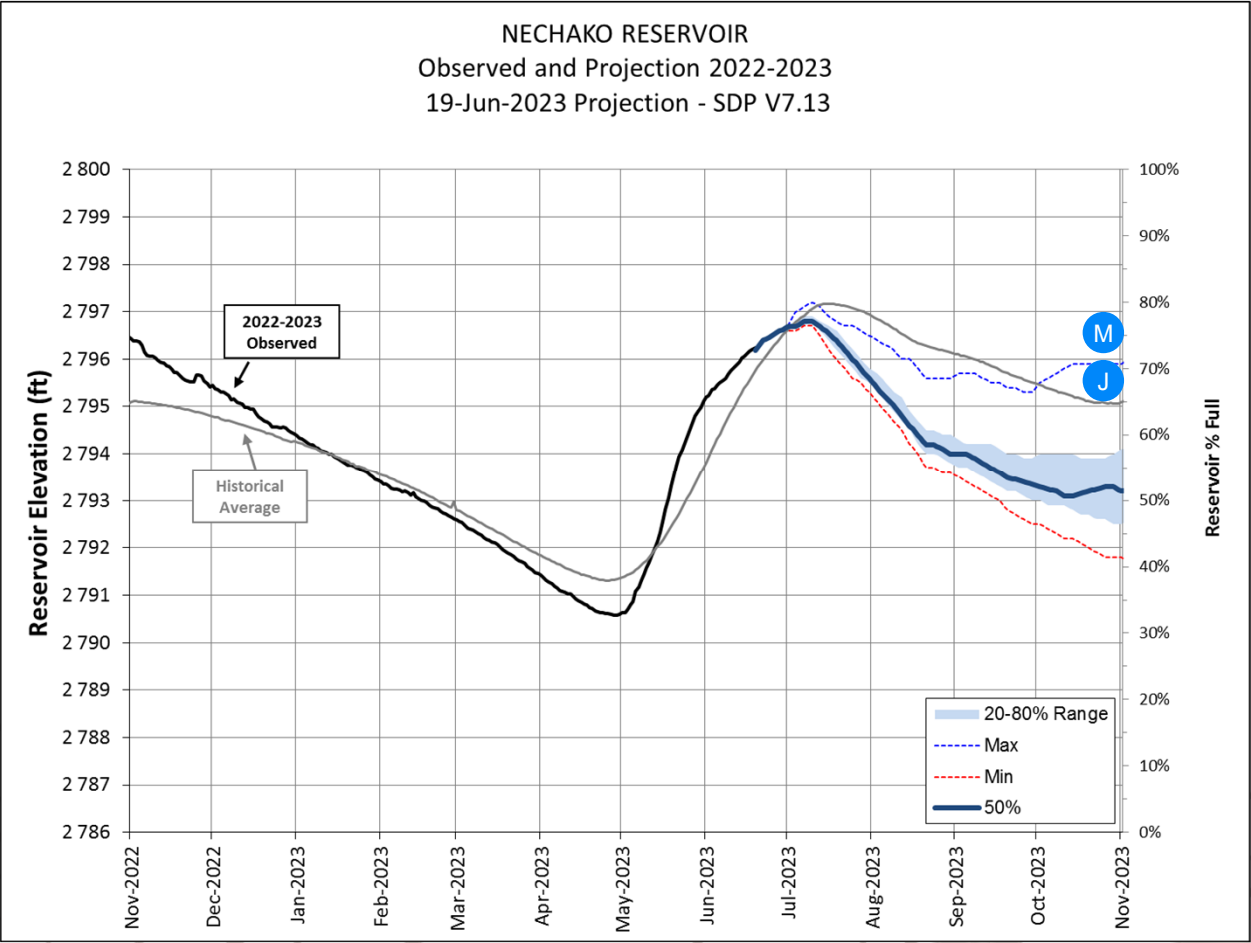
Observed Inflows and Discharge vs Historical



Spring Freshet Inflow Volume

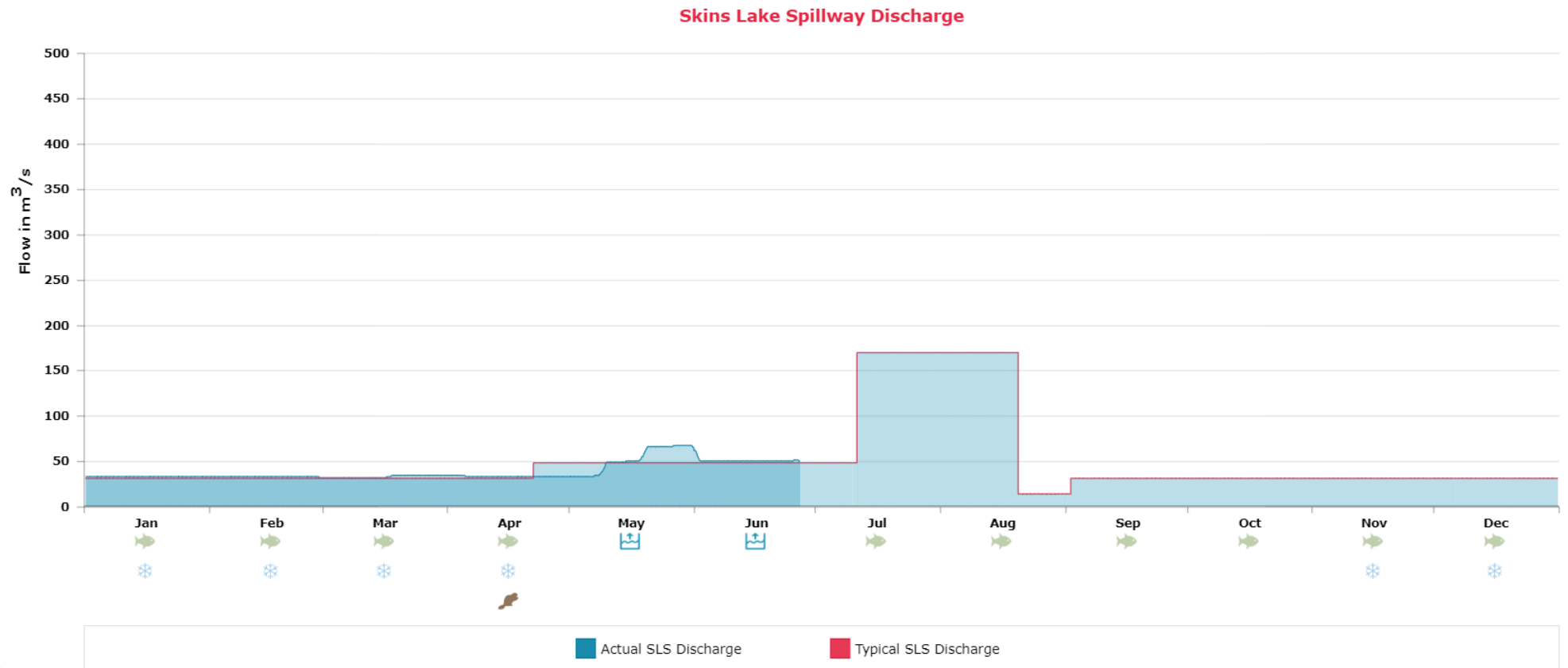


Reservoir Level Projection

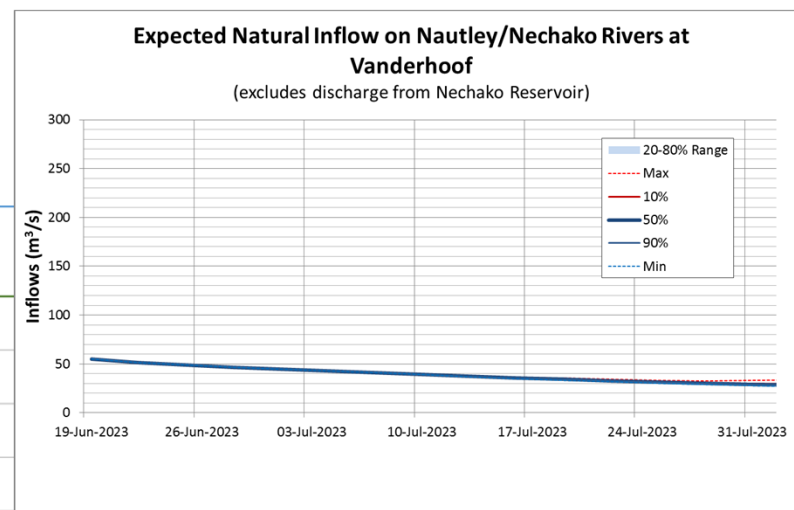
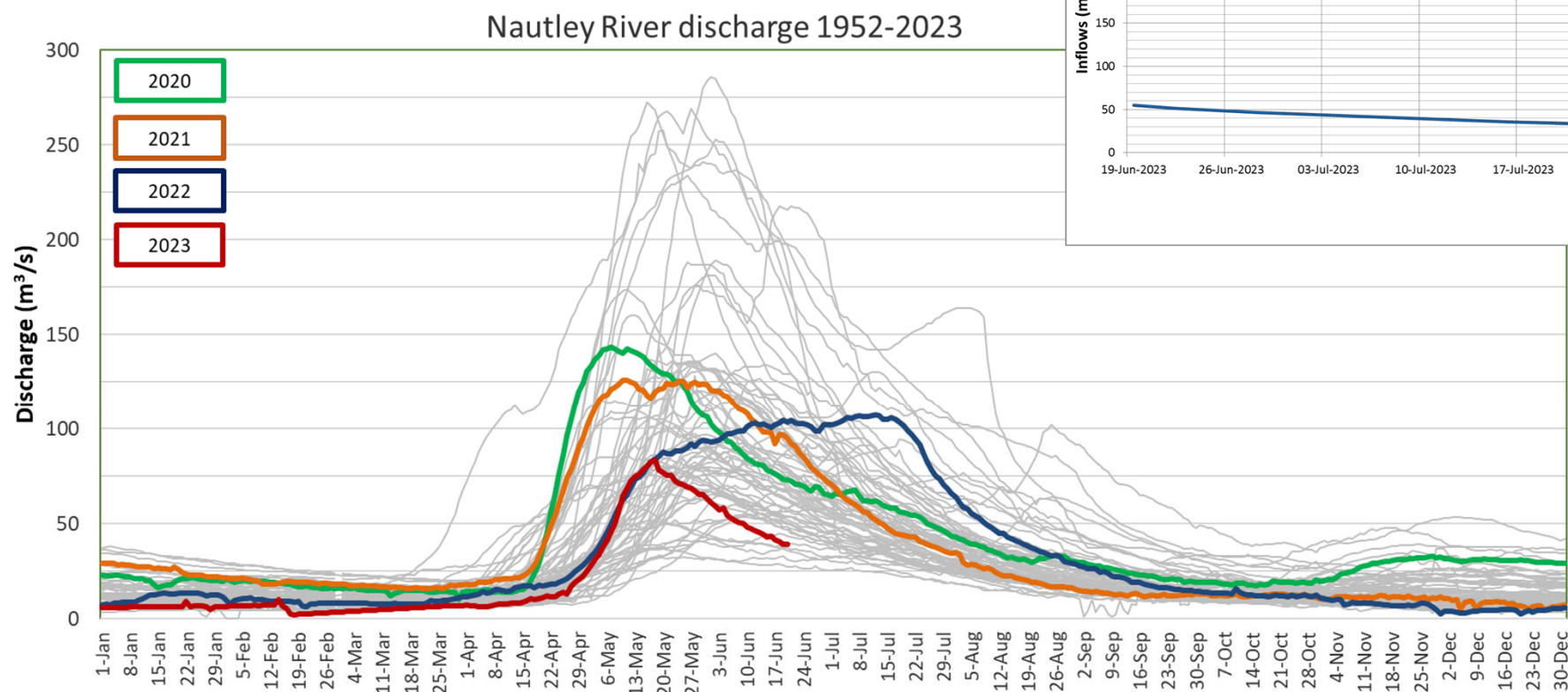


Skins Lake Spillway Release Forecast

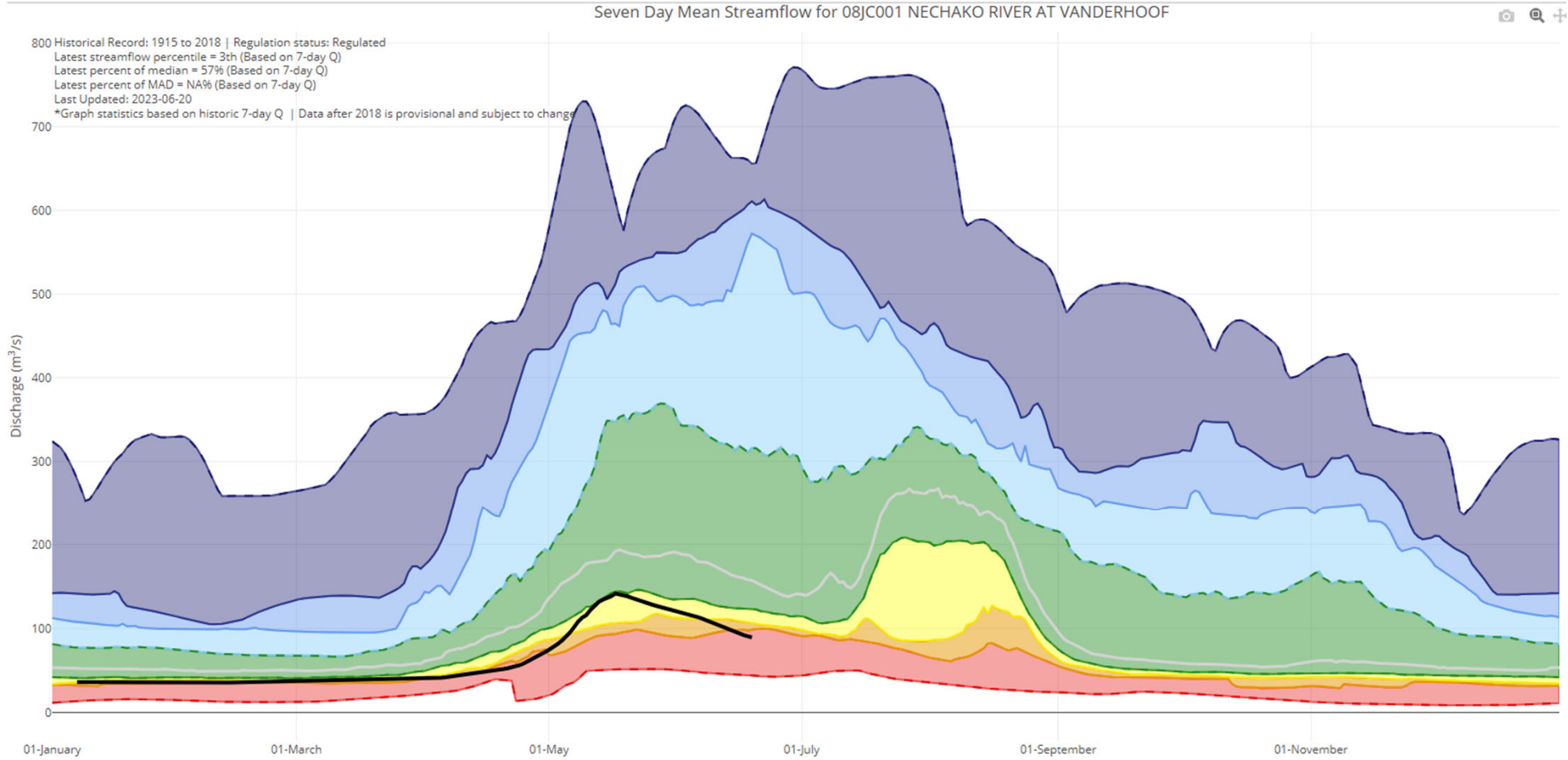
- Current = ~50 m³/s
Minimum = 49 m³/s



Nautley River Flows Forecast

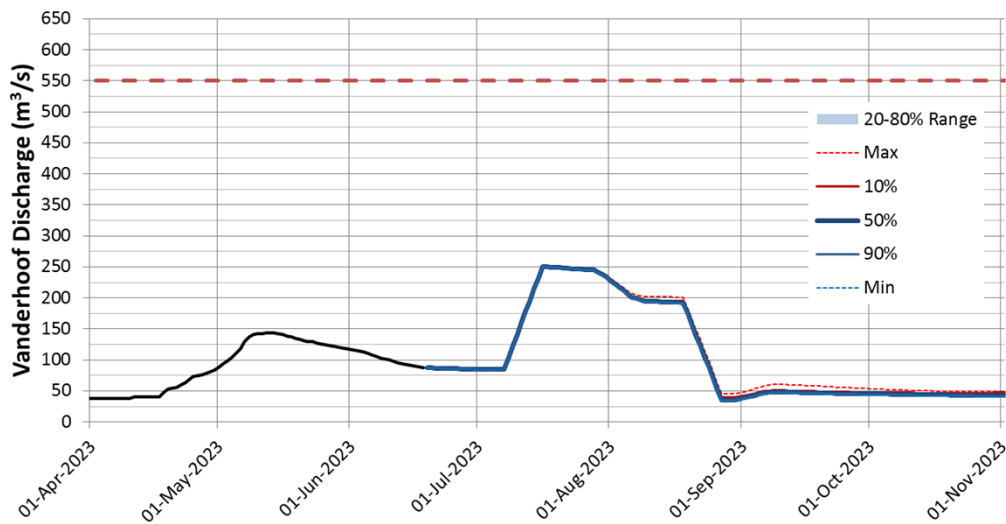


Vanderhoof

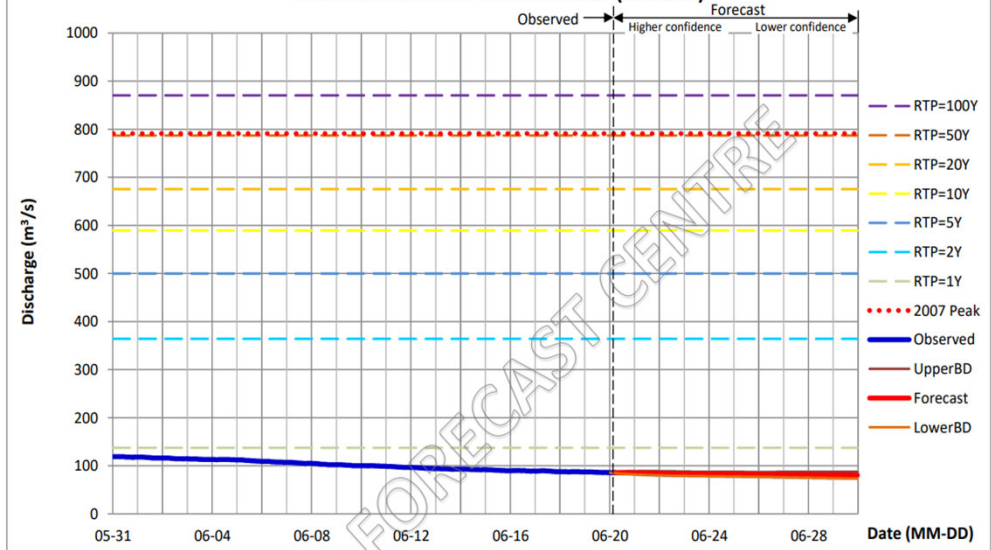


Forecast - Vanderhoof

Expected Total Discharge at Vanderhoof



NECHAKO RIVER AT VANDERHOOF (08JC001)



Reading at 06 AM (m³/s) Tue 2023-06-20	Forecast Daily Discharge (m³/s): AVERAGE									
	UPPER BOUND					LOWER BOUND				
	Tue	Wed	Thu	Fri	Sat	Sun	Mon	Tue	Wed	Thu
85.7	87.7 83.4	88.8 81.0	88.1 79.4	87.3 78.7	87.1 78.0	86.9 77.3	86.9 76.5	87.0 75.6	87.2 74.7	87.3 73.9

RTP=1Y	RTP=2Y	RTP=5Y	RTP=10Y	RTP=20Y	RTP=50Y	RTP=100Y	2007 Peak
137.4	364.1	499.7	589.4	675.5	786.9	870.4	791.0
							(m³/s)

Remark: This station is labeled as "regulated", and the forecast is the sum of natural flows and extended regulated flow from 08JA017.

2023 Talking Points

- Contracting
- Research
- Spillway Operations
- BC Hydro Call for Energy



RioTinto